

SILVIA LEVENSON AND LUCA LANZI

Who in the world am I ?

Two artists exhibition | drawings, objects, installations | April 25 - June 13, 2015

Page 1 / 50

Who in the world am I ?



lorch+seidel contemporary

lorch+seidel galerie | Tucholskystr. 38 | T + 49. 30.978 939 35 | info@lorch-seidel.de | di-fr tue-fri 13-19 h
contemporary art | D-10117 Berlin | M + 49. 176.235 265 65 | www.lorch-seidel.de | sa sat 12-18 h

SILVIA LEVENSON AND LUCA LANZI

Who in the world am I ?

Two artists exhibition | drawings, objects, installations | April 25 - June 13, 2015

Page 2 / 50



Kindheit ist das Thema der gemeinsamen Ausstellung *Who in the world am I?* von Silvia Levenson und Luca Lanzi. Unsere Gefühle und Sehnsüchte, Spiele und Erfahrungen in jener Zeit, aber auch Hoffnungen und Wünsche, Ansprüche und Erwartungen, mit denen Kinder bedacht werden. Der Blick der Künstler geht dabei in die Vergangenheit wie auch in die Zukunft.

Who in the world am I? schreibt Silvia Levenson in kaum wahrnehmbarer Schrift auf eine Garnitur unbefleckter Babywäsche. Nur die Umrisslinien der Buchstaben sind mit feinem Graphit-Stift auf die stumpf-matte Oberfläche der Wäschestücke aus weißem Opakglas aufgetragen. Die weiße Schrift auf weißem Grund wirkt leichtflüchtig und könnte tatsächlich problemlos abgewischt oder wegradiert werden. Die Reduzierung des Schriftbildes spiegelt das Suchen, die Offenheit, Neugier und Unsicherheit am Anfang eines Menschenlebens. Eine Antwort gibt es nicht und doch ist die Frage allgegenwärtig.

Don't hold your breath, eine andere Arbeit von Silvia Levenson, zeigt einen Kinderstuhl, der - platziert auf einer Sternkarte - förmlich durchs Weltall zu gleiten scheint. Auf der Sitzfläche des Stuhls liegt eine farblose Glaskugel. Die Namen der Sternbilder, der Blick in die Glaskugel, das Schweben des Stuhls, die Aufforderung im Werktitel, den Atem fließen zu lassen, all das zusammen liest sich wie die Hoffnung eines Erwachsenen, das Kind möge seine unbegrenzten Möglichkeiten und Chancen nutzen, seinen Platz auf dem Stuhl bzw. im Leben, finden.

Oberhalb von bunten Schmetterlingen baumelt vom oberen Bildrand ein paar Kinderfüße. *How long do butterflies live?* - eine Foto-Montage aus acht Wandfliesen, die wiederum aus zwei miteinander verschmolzenen Glasplatten bestehen - spielt mit der Frage nach unserer Lebenszeit. Bei Schmetterlingen beträgt sie mitunter nur einen Tag.

Die beiden figürlichen Arbeiten *Bunny Girl* und *Black Sheep* aus Silvia Levensons Serie *Strange Little Girls* thematisieren Rollenmuster, denen sich bereits Kinder ausgesetzt sehen. Der eindringliche Kontrast zwischen kindlich-unschuldiger Figur und übergestülptem Tierkopf und lässt die Konflikte der Betroffenen erahnen.

Drei Teddybären aus Pappmaché tragen in violetter Schrift die Botschaft *I feel strange*. Sie erinnern daran, dass Kindheit nicht nur Geborgenheit und Freiheit von Sorgen bedeutet, sondern auch die Erfahrung von Beklemmung, Unverständnis oder Ausgrenzung dazu gehören kann.

Die Motive in Luca Lanzis Zeichnungen lassen sich in zwei Gruppen einteilen: zum einen die Spielzeugtiere wie Pferdchen, Lämmchen oder Vögelchen, teils auf Rädern, teils als Monument auf einem Sockel, zum anderen die Puppen (ital. *Bambolo*). In seinen frühen Zeichnungen waren sowohl Spielzeugtiere wie auch die Puppen eher Objekte. Sie waren sie benutzt, gezeichnet, geschunden, manche sogar verwundet. Sie trugen ihre Spuren und erzählten durch ihr Äußeres ihre Geschichte. Gleichzeitig riefen sie im Betrachter eigene Kindheitserinnerungen wach.

In einigen der jüngeren Zeichnungen jedoch wurde der *Bambolo* zum Akteur: Er fliegt auf dem Vogelrücken durch die Luft oder schwebt samt seinem Spiegelbild im Ruderboot durch den undefinierten Raum. Auch in der aktuellen Ausstellung gibt es zwei großformatige Zeichnungen, die in diese Kategorie einzuordnen sind: *Knight* und *I want to be a bird*. Beide Zeichnungen nehmen Bezug auf wichtige kindliche Erfahrungen wie z. B. das Fahren mit einem Tretroller, die Geschwindigkeit der Fortbewegung selbst bestimmen zu können und die Balance halten zu müssen oder die Erkenntnis, dass nur ein Vogel fliegen kann.

In zwei weiteren Zeichnungen tritt der *Bambolo* als Jongleur in Erscheinung. Das Spiel im Allgemeinen und das Jonglieren mit Bällen im Besonderen können auch als Metapher für das Leben als Ganzes interpretiert werden. Das Spiel bietet die gleiche Gefühlspalette wie das wahre Leben, von unbändiger Freude bis hin zu absoluter Niedergeschlagenheit. Das Spiel gleicht einer Übung fürs Leben. Beim Jonglieren hat der Spieler das Spiel im wahrsten Sinne des Wortes selbst in der Hand. Die Anzahl der Bälle und damit die Herausforderungen und Geschwindigkeit bestimmt nur er. Ohne seine Konzentration und Übersicht ist das Spiel schnell zu Ende. Und das Risiko, einen Ball zu verlieren, ist immer mit von der Partie. Bei der Suche nach einem Werktitel machte sich Luca Lanzi selbst zum Spieler, indem er ein italienisches Wortspiel benutzte und aus dem *Giocoliere* (Spieler) - der hier ja mit farbigen Bällen jongliert - einen *Giocoliere* werden ließ. Jetzt geht es nicht nur darum, Bälle zu werfen und zu fangen, sondern auch um die Wahrnehmung der Farbe.

Childhood is the theme of Silvia Levenson's and Luca Lanzi's joint exhibition *Who in the world am I?* Its feelings and desires, games and experiences, but also the hopes and dreams, the demands and expectations children must face. In these works, the artists' vision extends into the past, and as well as into the future.

Who in the world am I? are the words Silvia Levenson inscribes in barely perceptible letters on a set of immaculate baby clothes. Only the contours of the letters are applied in fine graphite onto the matt, dull surface of the clothes, made of opaque, white glass. The white lettering on the white ground looks volatile and, indeed, could easily be erased or wiped away. The minimalist typeface mirrors the searching, the openness, the curiosity and uncertainty that are present at the start of every human life. As yet, there is no answer, but the question remains omnipresent.

Don't hold your breath, another work by Silvia Levenson, shows a child's chair, placed on top of a stellar map that seems to literally glide through space. Resting on the seat is a colorless glass bowl. The names of the constellations, the view into the glass bowl, the almost gliding chair, the imperative of the work's title to release one's breath: all of this can be read as an adult's desire to see the child make use of its chances and opportunities, to find its place on the chair or in life.

Dangling from the upper edge of the picture, above a group of multicolored butterflies, is a pair of children's feet. *How long do butterflies live?* - a photomontage composed of eight wall tiles, each consisting of two fused glass panels - addresses the theme of the lifespan. Some butterflies live only a single day.

The two figurative works *Bunny Girl* and *Black Sheep* (both part of Silvia Levenson's series *Strange Little Girls*) deal with the role models even children must face. The powerful contrast between the figure's childlike innocence and the animal head set on top of it offer an ominous foretaste of adult conflict.

In violet letters, three papier-mâché teddy bears transmit the message *I feel strange*. They seem to remind us that childhood stands not just for security and freedom from worry, but also for anxiety, lack of comprehension, and feelings of isolation.

The motifs in Luca Lanzi's drawings can be divided into two groups: first, there are the toy animals: little horses, lambs, or birds, some set on wheels, others on pedestals like monuments; and secondly, the dolls (Ital. *bambolo*). His early drawings feature both toy animals and dolls. These were used, marked, maltreated, even wounded. They bore traces and told their stories through their outward forms of appearance. At the same time, they evoked the viewer's own memories of childhood.

In some of Luca Lanzi's more recent drawings, however, the *bambolo* becomes an actor: he flies through the air on a bird's back or glides through space in a rowboat along with his mirror image. In the current exhibition as well, there are two large-format drawings from this group: *Knight* and *I want to be a bird*. Both allude to key childhood experiences, riding a scooter for example, determining the speed and maintaining balance on your own volition, or the insight that only birds can fly.

In two further drawings, the *bambolo* appears as a juggler (Ital. *giocoliere*). Games in general and juggling with balls in particular can be interpreted as a metaphor for life as a whole. A game offers the same spectrum of emotions as real life, from unbridled joy to abject dejection. A game can be seen as practice for life. In the truest sense of the word, the juggler keeps the game in hand. He chooses the number of balls, the speed and the challenge. Without his concentration, his view of the whole, it ends all too quickly. And the risk of losing a ball is always part of the game. With this work, Luca Lanzi also made a game of his search for a title, resorting to wordplay in Italian: he adds three letters (o-l-o) to the middle of the word *giocoliere*, which hence becomes *giocoloriere*. Now, the game is about more than catching and throwing balls, it concerns color perception as well.

SILVIA LEVENSON AND LUCA LANZI

Who in the world am I ?

Two artists exhibition | drawings, objects, installations | April 25 - June 13, 2015

Page 5 / 50



SILVIA LEVENSON AND LUCA LANZI

Who in the world am I ?

Two artists exhibition | drawings, objects, installations | April 25 - June 13, 2015

Page 6 / 50



LUCA LANZI

Agnellino

Sculpture object | Carrara marble | 44 x 44 x 28 cm | 17.3 x 17.3 x 11 inches | H x L x W | executed in 2007

Sales price 5.200 € | 19% VAT included

lorch+seidel galerie | Tucholskystr. 38 | T + 49. 30.978 939 35 | info@lorch-seidel.de | di-fr tue-fri 13-19 h
contemporary art | D-10117 Berlin | M + 49. 176.235 265 65 | www.lorch-seidel.de | sa sat 12-18 h

SILVIA LEVENSON AND LUCA LANZI

Who in the world am I ?

Two artists exhibition | drawings, objects, installations | April 25 - June 13, 2015

Page 7 / 50



SILVIA LEVENSON AND LUCA LANZI

Who in the world am I ?

Two artists exhibition | drawings, objects, installations | April 25 - June 13, 2015

Page 8 / 50



LUCA LANZI

I want to be a bird

Drawing | mixed media on paper, mounted on canvas, stretcher | 138 x 98 cm | 54.3 x 38.6 inches | H x W | executed in 2015

Private collection

lorch+seidel galerie | Tucholskystr. 38 | T + 49. 30.978 939 35 | info@lorch-seidel.de | di-fr tue-fri 13-19 h
contemporary art | D-10117 Berlin | M + 49. 176.235 265 65 | www.lorch-seidel.de | sa sat 12-18 h

SILVIA LEVENSON AND LUCA LANZI

Who in the world am I ?

Two artists exhibition | drawings, objects, installations | April 25 - June 13, 2015

Page 9 / 50



SILVIA LEVENSON AND LUCA LANZI

Who in the world am I ?

Two artists exhibition | drawings, objects, installations | April 25 - June 13, 2015

Page 10 / 50

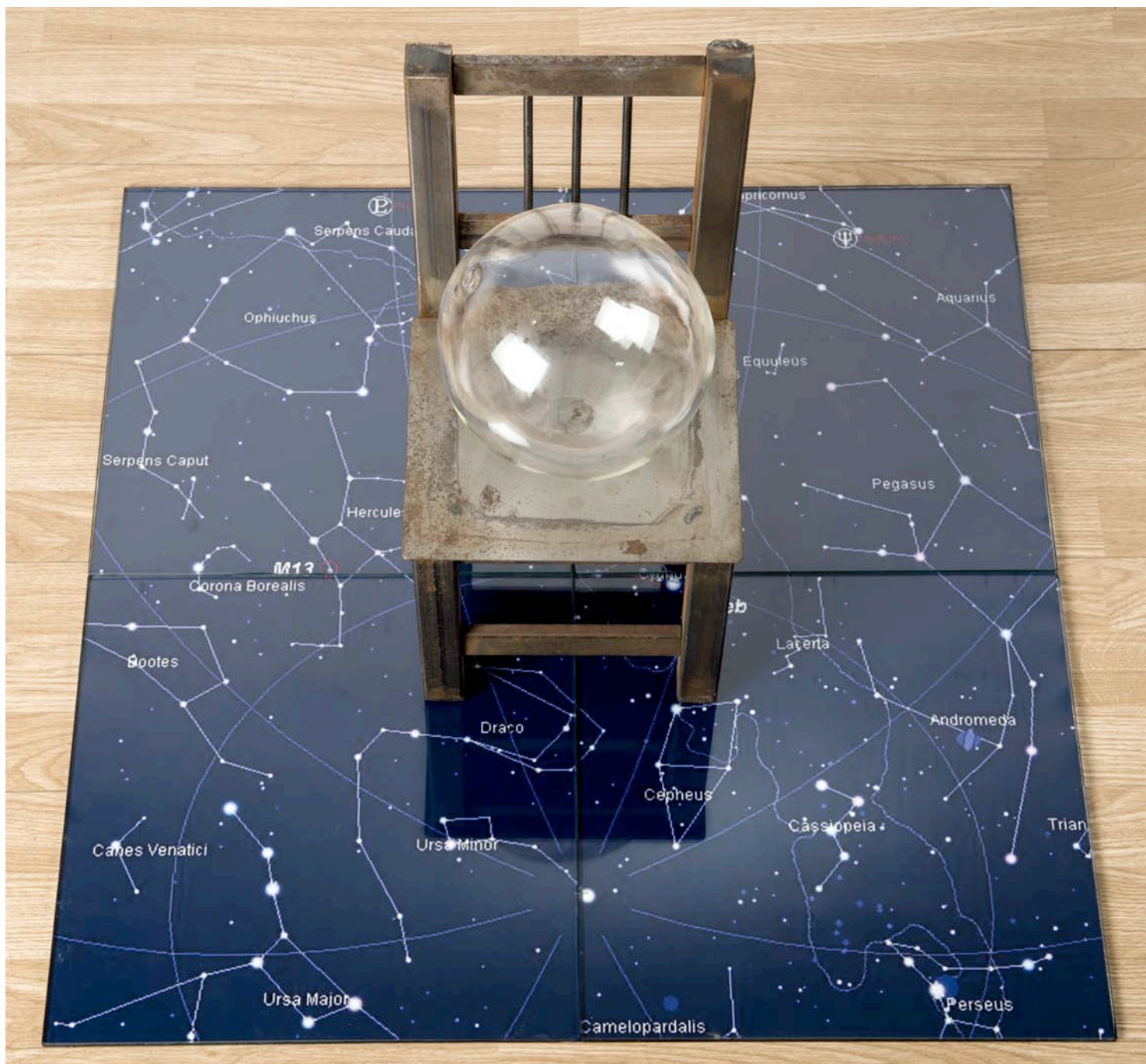


SILVIA LEVENSON AND LUCA LANZI

Who in the world am I ?

Two artists exhibition | drawings, objects, installations | April 25 - June 13, 2015

Page 11 / 50



SILVIA LEVENSON

Don't hold your breath

Installation | glass, iron, print | 50 x 75 x 75 cm | 19.7 x 29.5 x 29.5 inches | H x L x W | executed in 2015

Sales price 4.800 € | 19% VAT included

lorch+seidel galerie | Tucholskystr. 38 | T + 49. 30.978 939 35 | info@lorch-seidel.de | di-fr tue-fri 13-19 h
contemporary art | D-10117 Berlin | M + 49. 176.235 265 65 | www.lorch-seidel.de | sa sat 12-18 h

SILVIA LEVENSON AND LUCA LANZI

Who in the world am I ?

Two artists exhibition | drawings, objects, installations | April 25 - June 13, 2015

Page 12 / 50

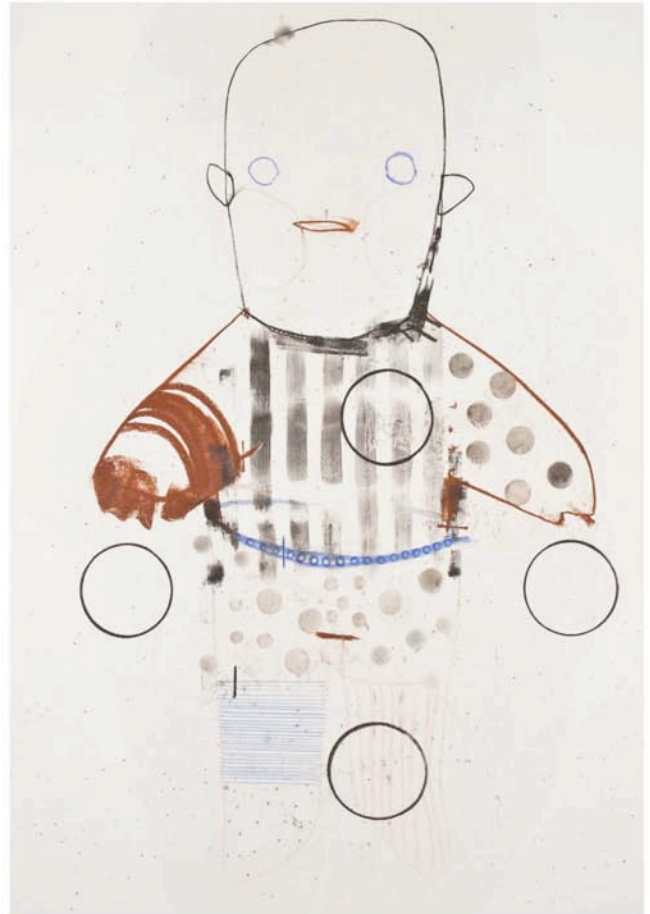
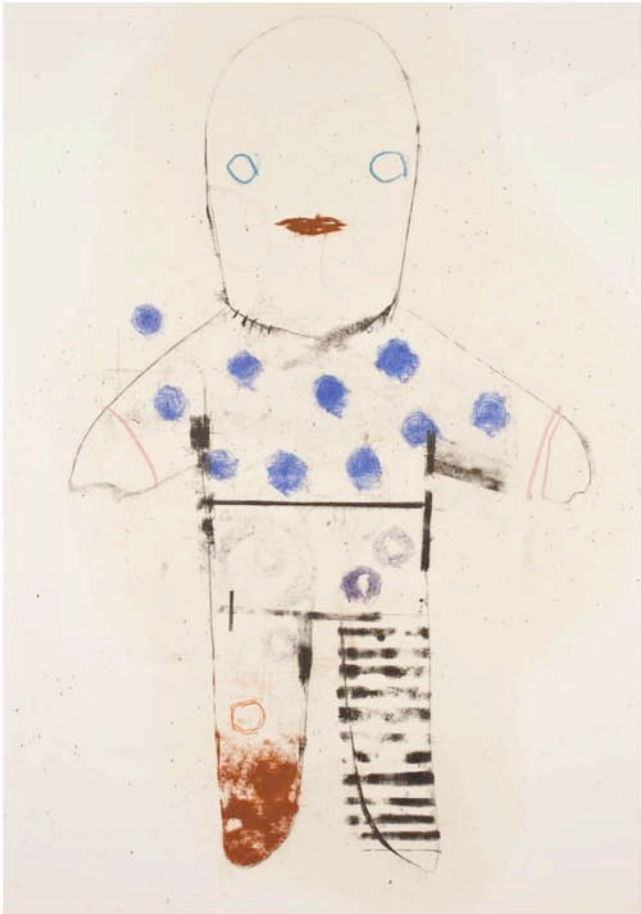


SILVIA LEVENSON AND LUCA LANZI

Who in the world am I ?

Two artists exhibition | drawings, objects, installations | April 25 - June 13, 2015

Page 13 / 50



LUCA LANZI

Giocolorieri

Two Drawings | mixed media on paper, mounted on canvas, stretcher | 70 x 50 cm | 27.6 x 19.7 inches | H x W | executed in 2015

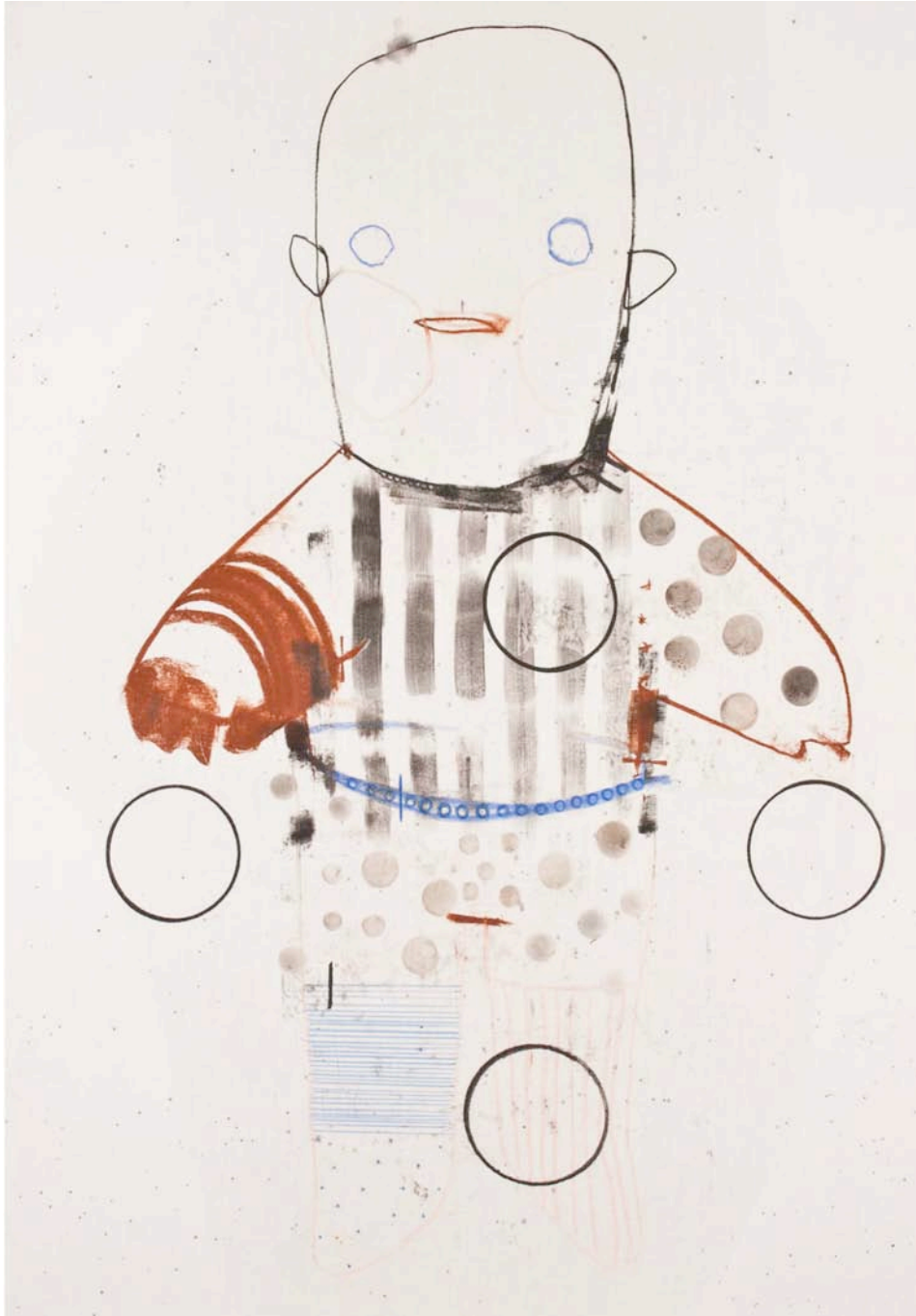
lorch+seidel galerie | Tucholskystr. 38 | T + 49. 30.978 939 35 | info@lorch-seidel.de | di-fr tue-fri 13-19 h
contemporary art | D-10117 Berlin | M + 49. 176.235 265 65 | www.lorch-seidel.de | sa sat 12-18 h

SILVIA LEVENSON AND LUCA LANZI

Who in the world am I ?

Two artists exhibition | drawings, objects, installations | April 25 - June 13, 2015

Page 14 / 50



LUCA LANZI

Giocoliere | *White Balls*

Drawing | mixed media on paper, mounted on canvas, stretcher | 70 x 50 cm | 27.6 x 19.7 inches | H x W | executed in 2015

Private collection

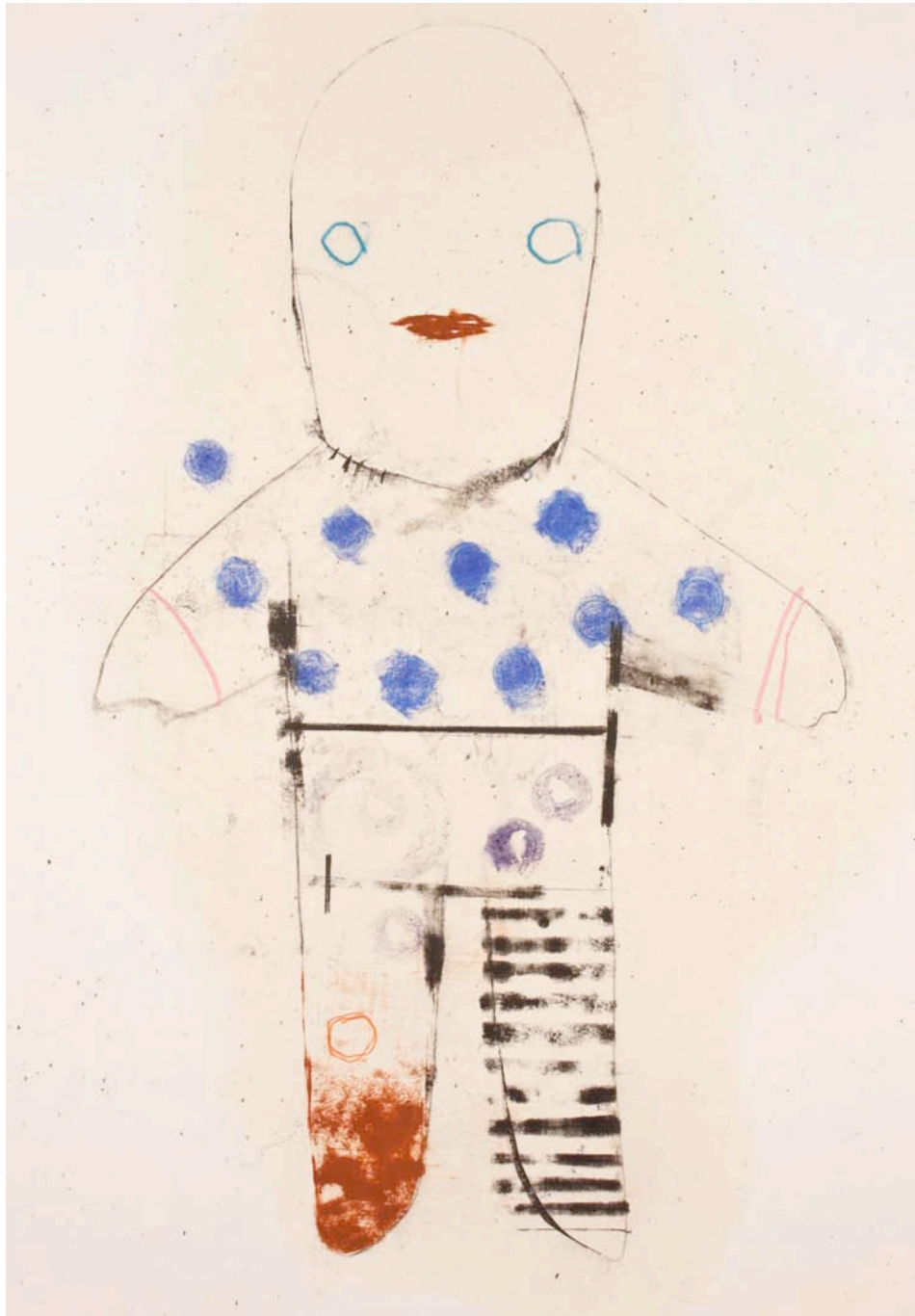
lorch+seidel galerie | Tucholskystr. 38 | T + 49. 30.978 939 35 | info@lorch-seidel.de | di-fr tue-fri 13-19 h
contemporary art | D-10117 Berlin | M + 49. 176.235 265 65 | www.lorch-seidel.de | sa sat 12-18 h

SILVIA LEVENSON AND LUCA LANZI

Who in the world am I ?

Two artists exhibition | drawings, objects, installations | April 25 - June 13, 2015

Page 15 / 50



LUCA LANZI

Giocoloriere | *Blue Balls*

Drawing | mixed media on paper, mounted on canvas, stretcher | 70 x 50 cm | 27.6 x 19.7 inches | H x W | executed in 2015

Private collection

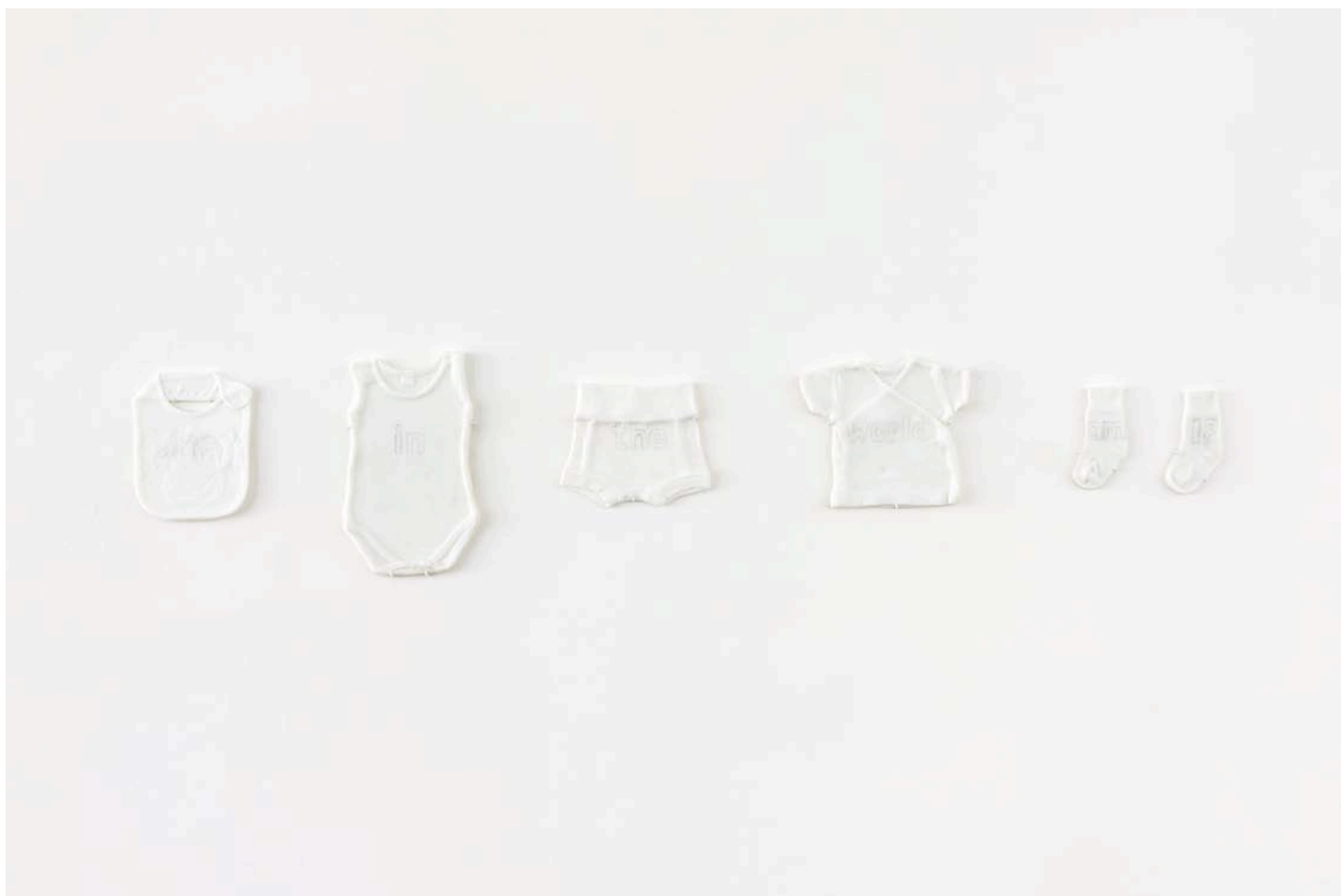
lorch+seidel galerie | Tucholskystr. 38 | T + 49. 30.978 939 35 | info@lorch-seidel.de | di-fr tue-fri 13-19 h
contemporary art | D-10117 Berlin | M + 49. 176.235 265 65 | www.lorch-seidel.de | sa sat 12-18 h

SILVIA LEVENSON AND LUCA LANZI

Who in the world am I ?

Two artists exhibition | drawings, objects, installations | April 25 - June 13, 2015

Page 16 / 50



SILVIA LEVENSON

Who in the world am I ?

Six sculpture objects | kiln-cast glass, graphite | 24 x 142 x 1 cm | 9.5 x 55.9 x 0.5 inches | H x L x D | executed in 2015

Sales price 5.900 € | 19% VAT included

lorch+seidel galerie | Tucholskystr. 38 | T + 49. 30.978 939 35 | info@lorch-seidel.de | di-fr tue-fri 13-19 h
contemporary art | D-10117 Berlin | M + 49. 176.235 265 65 | www.lorch-seidel.de | sa sat 12-18 h

SILVIA LEVENSON AND LUCA LANZI

Who in the world am I ?

Two artists exhibition | drawings, objects, installations | April 25 - June 13, 2015

Page 17 / 50



SILVIA LEVENSON AND LUCA LANZI

Who in the world am I ?

Two artists exhibition | drawings, objects, installations | April 25 - June 13, 2015

Page 18 / 50



SILVIA LEVENSON AND LUCA LANZI

Who in the world am I ?

Two artists exhibition | drawings, objects, installations | April 25 - June 13, 2015

Page 19 / 50



SILVIA LEVENSON AND LUCA LANZI

Who in the world am I ?

Two artists exhibition | drawings, objects, installations | April 25 - June 13, 2015

Page 20 / 50



SILVIA LEVENSON AND LUCA LANZI

Who in the world am I ?

Two artists exhibition | drawings, objects, installations | April 25 - June 13, 2015

Page 21 / 50



SILVIA LEVENSON AND LUCA LANZI

Who in the world am I ?

Two artists exhibition | drawings, objects, installations | April 25 - June 13, 2015

Page 22 / 50



SILVIA LEVENSON

How long do butterflies live ?

Wall installation | fused glass | 61 x 102 cm | 24 x 40.2 inches | H x W | executed in 2015

Sales price 5.200 € | 19% VAT included

lorch+seidel galerie | Tucholskystr. 38 | T + 49. 30.978 939 35 | info@lorch-seidel.de | di-fr tue-fri 13-19 h
contemporary art | D-10117 Berlin | M + 49. 176.235 265 65 | www.lorch-seidel.de | sa sat 12-18 h

SILVIA LEVENSON AND LUCA LANZI

Who in the world am I ?

Two artists exhibition | drawings, objects, installations | April 25 - June 13, 2015

Page 23 / 50



SILVIA LEVENSON AND LUCA LANZI

Who in the world am I ?

Two artists exhibition | drawings, objects, installations | April 25 - June 13, 2015

Page 24 / 50



SILVIA LEVENSON

Strange Little Girl # 9 | Black Sheep

Sculpture object | kiln-cast glass, mixed-media | 117 x 50 x 50 cm | 46.1 x 19.7 x 19.7 | H x L x W | executed in 2015

Private collection

lorch+seidel galerie | Tucholskystr. 38 | T + 49. 30.978 939 35 | info@lorch-seidel.de | di-fr tue-fri 13-19 h
contemporary art | D-10117 Berlin | M + 49. 176.235 265 65 | www.lorch-seidel.de | sa sat 12-18 h

SILVIA LEVENSON AND LUCA LANZI

Who in the world am I ?

Two artists exhibition | drawings, objects, installations | April 25 - June 13, 2015

Page 25 / 50



SILVIA LEVENSON AND LUCA LANZI

Who in the world am I ?

Two artists exhibition | drawings, objects, installations | April 25 - June 13, 2015

Page 26 / 50



SILVIA LEVENSON AND LUCA LANZI

Who in the world am I ?

Two artists exhibition | drawings, objects, installations | April 25 - June 13, 2015

Page 27 / 50



SILVIA LEVENSON AND LUCA LANZI

Who in the world am I ?

Two artists exhibition | drawings, objects, installations | April 25 - June 13, 2015

Page 28 / 50

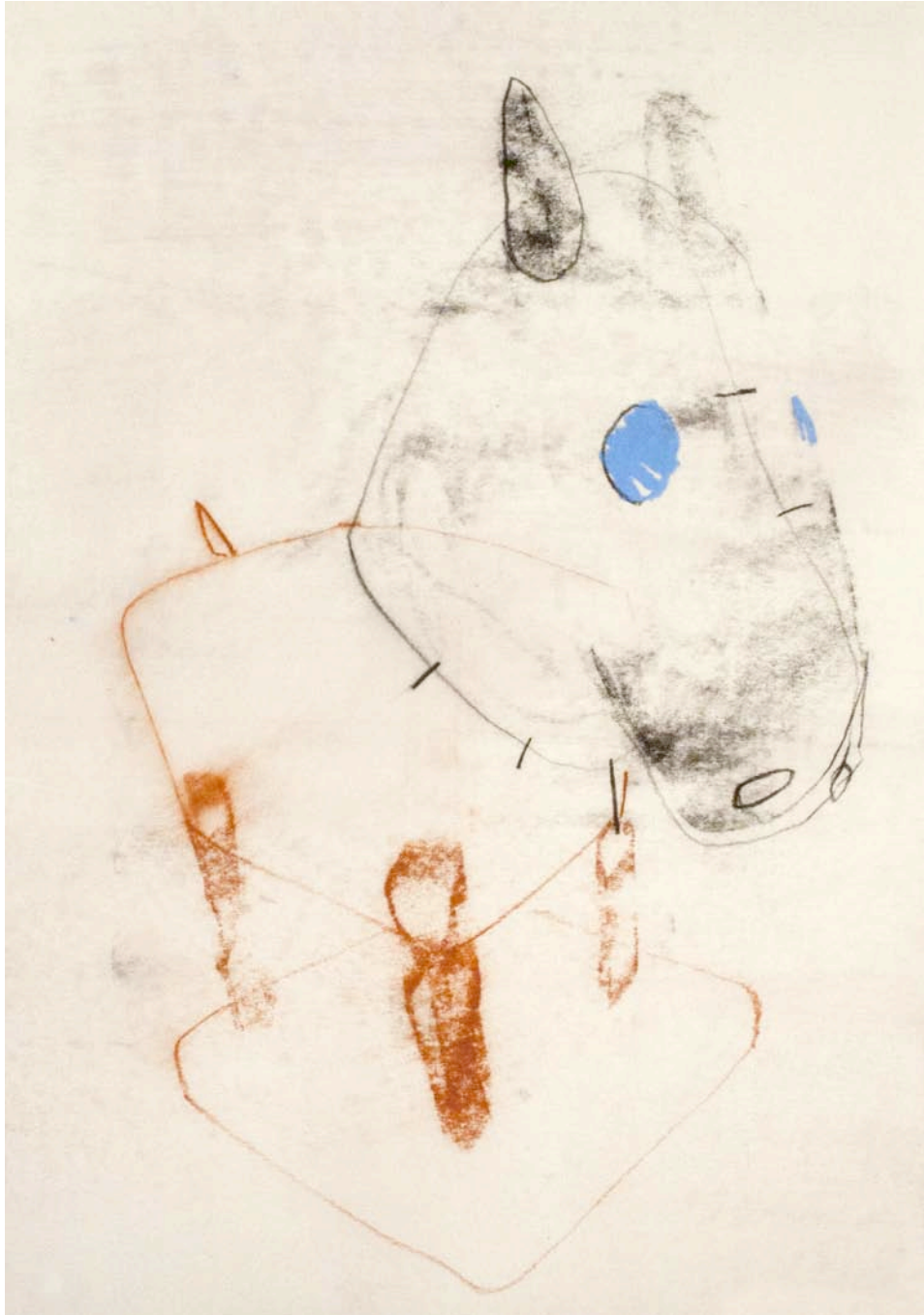


SILVIA LEVENSON AND LUCA LANZI

Who in the world am I ?

Two artists exhibition | drawings, objects, installations | April 25 - June 13, 2015

Page 29 / 50



LUCA LANZI

Piccolo Monumento Equestre | Blue Eyes

Drawing | mixed media on paper | 34,5 x 24,5 cm | 13.6 x 9.6 inches | executed in 2013 | frame

Sales price 1.200 € | 19% VAT included

lorch+seidel galerie | Tucholskystr. 38 | T + 49. 30.978 939 35 | info@lorch-seidel.de | di-fr tue-fri 13-19 h
contemporary art | D-10117 Berlin | M + 49. 176.235 265 65 | www.lorch-seidel.de | sa sat 12-18 h

SILVIA LEVENSON AND LUCA LANZI

Who in the world am I ?

Two artists exhibition | drawings, objects, installations | April 25 - June 13, 2015

Page 30 / 50



SILVIA LEVENSON AND LUCA LANZI

Who in the world am I ?

Two artists exhibition | drawings, objects, installations | April 25 - June 13, 2015

Page 31 / 50



LUCA LANZI

Knight

Drawing | mixed media on paper, mounted on canvas, stretcher | 136 x 98 cm | 53.5 x 38.6 inches | executed in 2015

Private collection

lorch+seidel galerie | Tucholskystr. 38 | T + 49. 30.978 939 35 | info@lorch-seidel.de | di-fr tue-fri 13-19 h
contemporary art | D-10117 Berlin | M + 49. 176.235 265 65 | www.lorch-seidel.de | sa sat 12-18 h

SILVIA LEVENSON AND LUCA LANZI

Who in the world am I ?

Two artists exhibition | drawings, objects, installations | April 25 - June 13, 2015

Page 32 / 50



SILVIA LEVENSON AND LUCA LANZI

Who in the world am I ?

Two artists exhibition | drawings, objects, installations | April 25 - June 13, 2015

Page 33 / 50



SILVIA LEVENSON

I feel strange

Three sculpture objects | papier-mâché, plaster, ink | 25 x 20 x 20 cm | 9.8 x 7.9 x 7.9 inches | H x L x W | executed in 2015

Sales price 3.200 € | 19% VAT included

lorch+seidel galerie | Tucholskystr. 38 | T + 49. 30.978 939 35 | info@lorch-seidel.de | di-fr tue-fri 13-19 h
contemporary art | D-10117 Berlin | M + 49. 176.235 265 65 | www.lorch-seidel.de | sa sat 12-18 h

SILVIA LEVENSON AND LUCA LANZI

Who in the world am I ?

Two artists exhibition | drawings, objects, installations | April 25 - June 13, 2015

Page 34 / 50



SILVIA LEVENSON AND LUCA LANZI

Who in the world am I ?

Two artists exhibition | drawings, objects, installations | April 25 - June 13, 2015

Page 35 / 50



SILVIA LEVENSON AND LUCA LANZI

Who in the world am I ?

Two artists exhibition | drawings, objects, installations | April 25 - June 13, 2015

Page 36 / 50



SILVIA LEVENSON

Strange Little Girl # 8 | Bunny Girl

Sculpture object | kiln-cast glass, mixed-media | 118 x 50 x 50 cm | 46.5 x 19.7 x 19.7 | H x L x W | executed in 2014

Sales price 15.000 € | 19% VAT included

lorch+seidel galerie | Tucholskystr. 38 | T + 49. 30.978 939 35 | info@lorch-seidel.de | di-fr tue-fri 13-19 h
contemporary art | D-10117 Berlin | M + 49. 176.235 265 65 | www.lorch-seidel.de | sa sat 12-18 h

SILVIA LEVENSON AND LUCA LANZI

Who in the world am I ?

Two artists exhibition | drawings, objects, installations | April 25 - June 13, 2015

Page 37 / 50



SILVIA LEVENSON AND LUCA LANZI

Who in the world am I ?

Two artists exhibition | drawings, objects, installations | April 25 - June 13, 2015

Page 38 / 50



SILVIA LEVENSON AND LUCA LANZI

Who in the world am I ?

Two artists exhibition | drawings, objects, installations | April 25 - June 13, 2015

Page 39 / 50

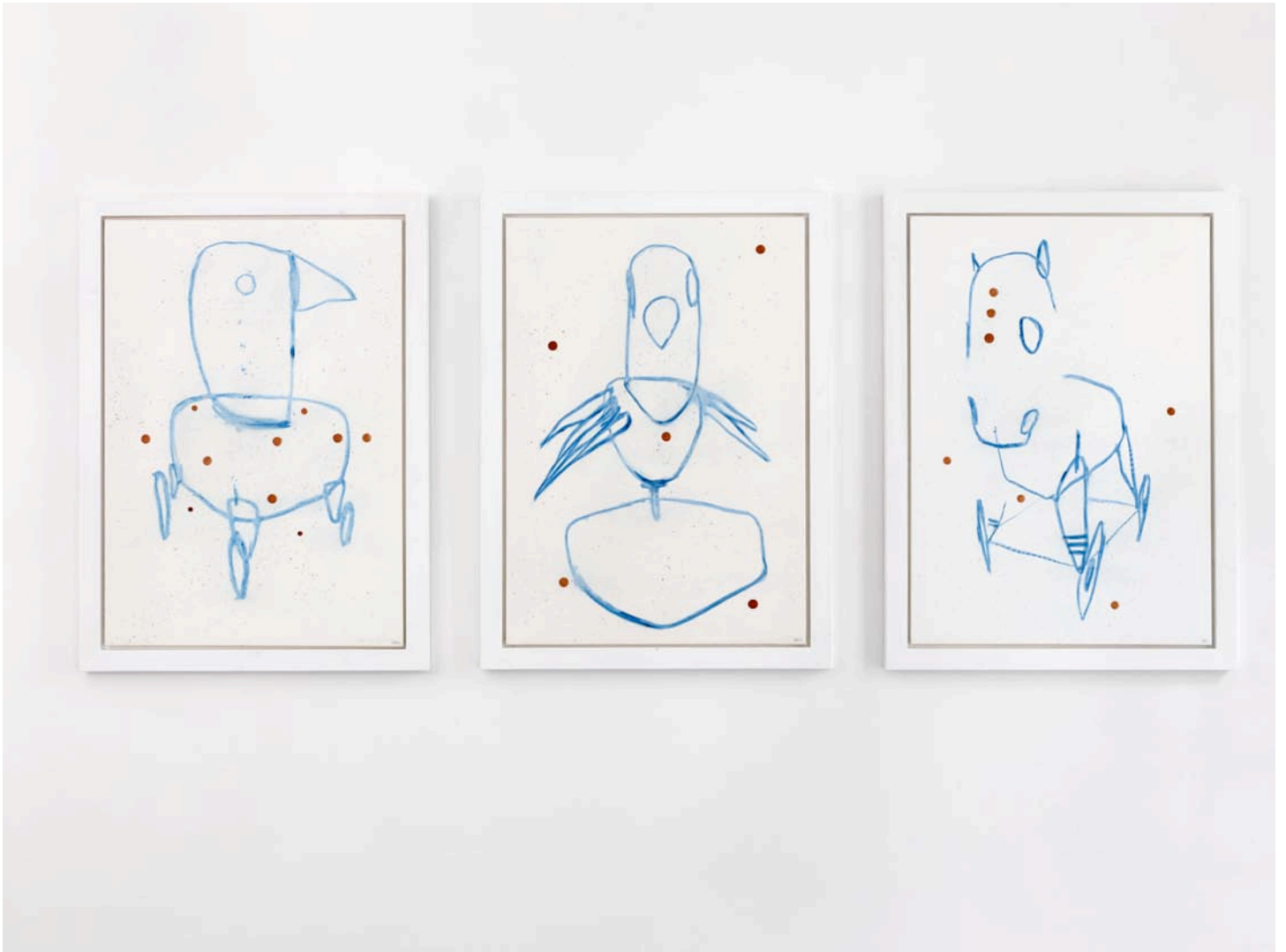


SILVIA LEVENSON AND LUCA LANZI

Who in the world am I ?

Two artists exhibition | drawings, objects, installations | April 25 - June 13, 2015

Page 40 / 50



LUCA LANZI

Triptych Magica

Three drawings | mixed media on paper, mounted on canvas, stretcher | 100 x 70 cm | 39.4 x 27.6 inches | H x W | executed in 2015 | frame

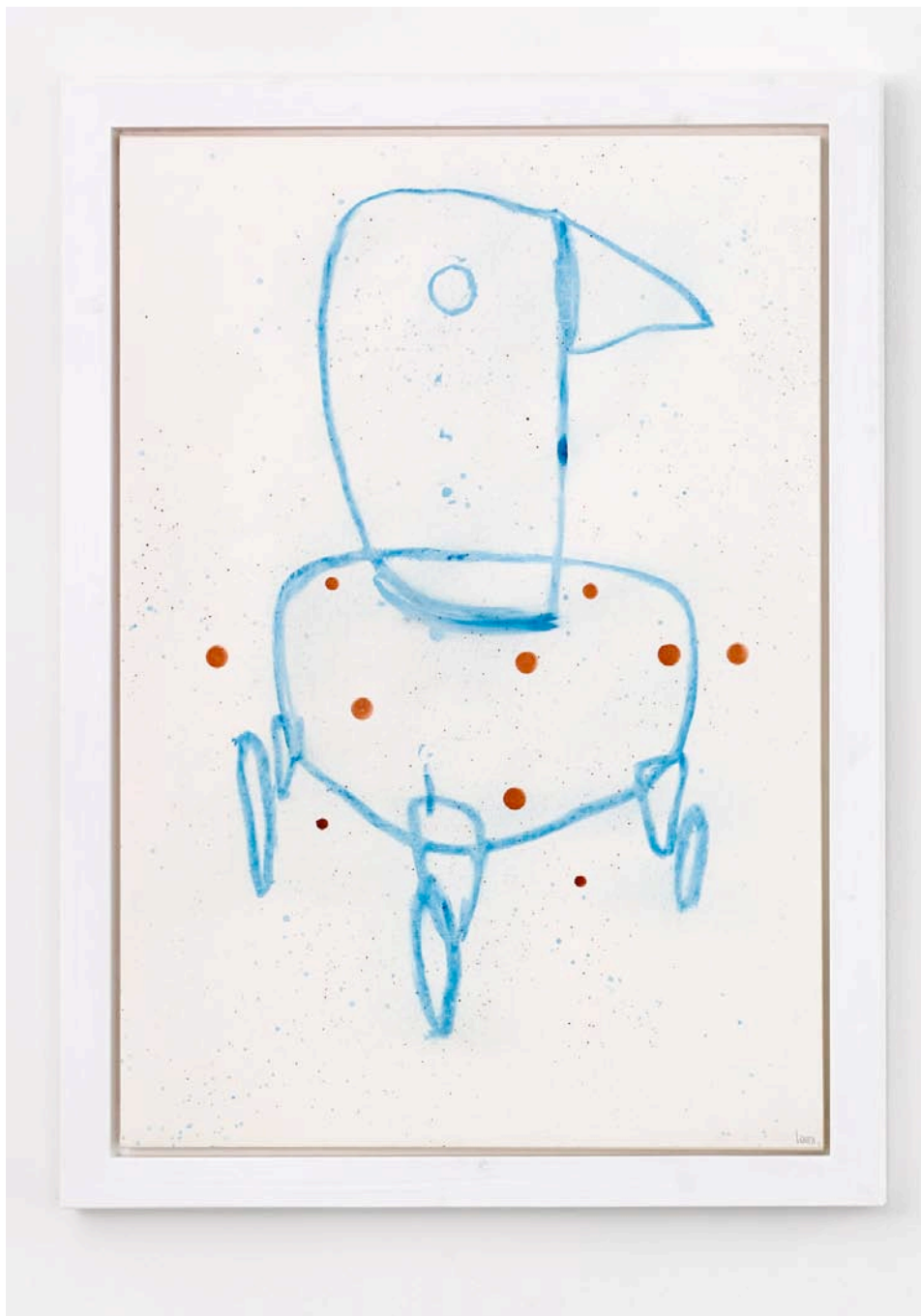
lorch+seidel galerie | Tucholskystr. 38 | T + 49. 30.978 939 35 | info@lorch-seidel.de | di-fr tue-fri 13-19 h
contemporary art | D-10117 Berlin | M + 49. 176.235 265 65 | www.lorch-seidel.de | sa sat 12-18 h

SILVIA LEVENSON AND LUCA LANZI

Who in the world am I ?

Two artists exhibition | drawings, objects, installations | April 25 - June 13, 2015

Page 41 / 50



LUCA LANZI

Magica | Bird on Wheels

Drawing | mixed media on paper | 100 x 70 cm | 39.4 x 27.6 inches | H x W | executed in 2015 | frame

Sales price 2.900 € | 19% VAT included

lorch+seidel galerie | Tucholskystr. 38 | T + 49. 30.978 939 35 | info@lorch-seidel.de | di-fr tue-fri 13-19 h
contemporary art | D-10117 Berlin | M + 49. 176.235 265 65 | www.lorch-seidel.de | sa sat 12-18 h

SILVIA LEVENSON AND LUCA LANZI

Who in the world am I ?

Two artists exhibition | drawings, objects, installations | April 25 - June 13, 2015

Page 42 / 50



LUCA LANZI

Magica | *Bird Monument*

Drawing | mixed media on paper | 100 x 70 cm | 39.4 x 27.6 inches | H x W | executed in 2015 | frame

Sales price 2.900 € | 19% VAT included

lorch+seidel galerie | Tucholskystr. 38 | T + 49. 30.978 939 35 | info@lorch-seidel.de | di-fr tue-fri 13-19 h
contemporary art | D-10117 Berlin | M + 49. 176.235 265 65 | www.lorch-seidel.de | sa sat 12-18 h

SILVIA LEVENSON AND LUCA LANZI

Who in the world am I ?

Two artists exhibition | drawings, objects, installations | April 25 - June 13, 2015

Page 43 / 50



LUCA LANZI

Magica | Horse on Wheels

Drawing | mixed media on paper | 100 x 70 cm | 39.4 x 27.6 inches | H x W | executed in 2015 | frame

Sales price 2.900 € | 19% VAT included

lorch+seidel galerie | Tucholskystr. 38 | T + 49. 30.978 939 35 | info@lorch-seidel.de | di-fr tue-fri 13-19 h
contemporary art | D-10117 Berlin | M + 49. 176.235 265 65 | www.lorch-seidel.de | sa sat 12-18 h

SILVIA LEVENSON AND LUCA LANZI

Who in the world am I ?

Two artists exhibition | drawings, objects, installations | April 25 - June 13, 2015

Page 44 / 50



LUCA LANZI

Trofeo

Drawing | mixed media on paper | 34,5 x 24,5 cm | 13.6 x 9.6 inches | executed in 2013 | frame

Private collection

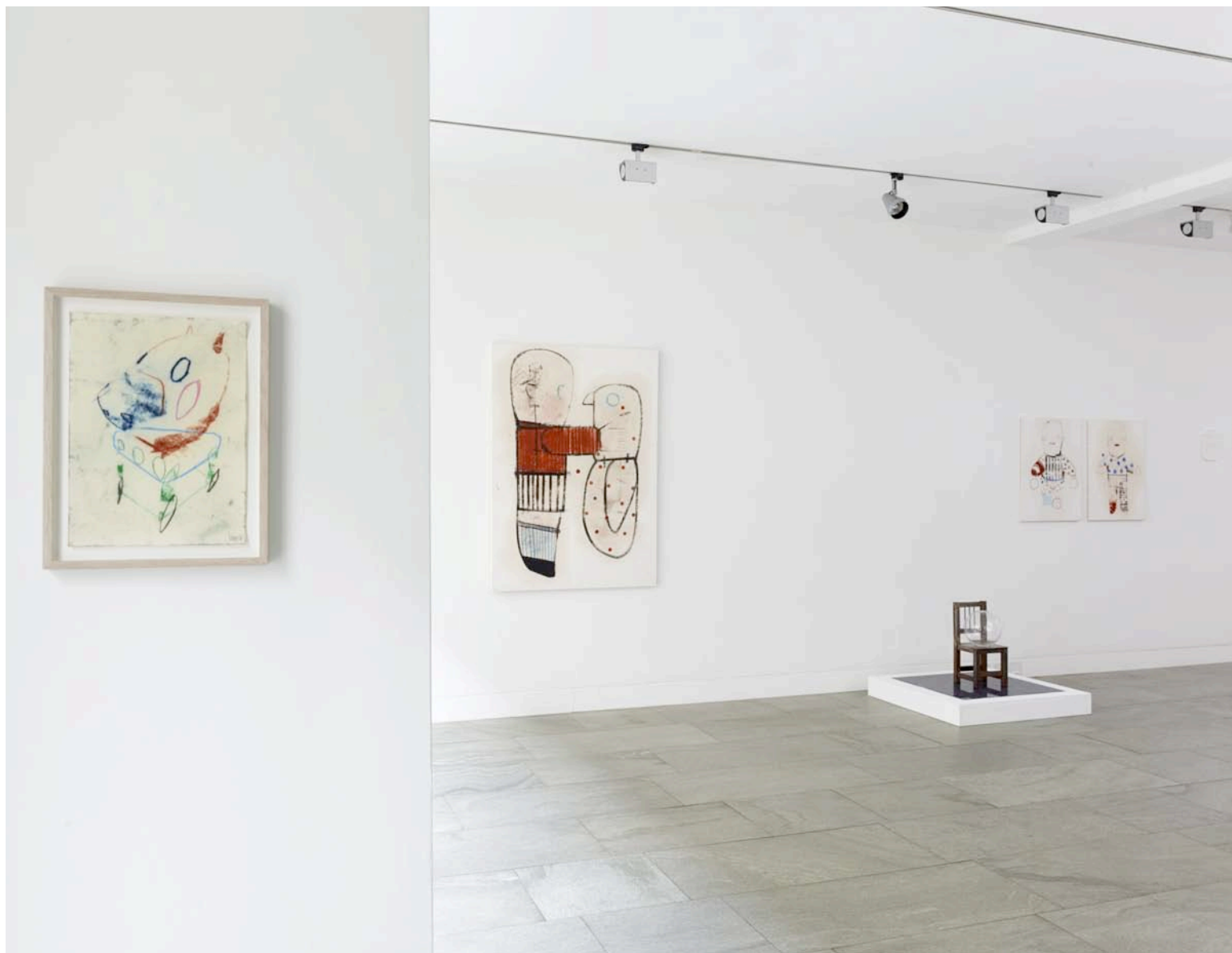
lorch+seidel galerie | Tucholskystr. 38 | T + 49. 30.978 939 35 | info@lorch-seidel.de | di-fr tue-fri 13-19 h
contemporary art | D-10117 Berlin | M + 49. 176.235 265 65 | www.lorch-seidel.de | sa sat 12-18 h

SILVIA LEVENSON AND LUCA LANZI

Who in the world am I ?

Two artists exhibition | drawings, objects, installations | April 25 - June 13, 2015

Page 45 / 50



SILVIA LEVENSON AND LUCA LANZI

Who in the world am I ?

Two artists exhibition | drawings, objects, installations | April 25 - June 13, 2015

Page 46 / 50



LUCA LANZI

Scacco

Drawing | mixed media on paper | 34,5 x 24,5 cm | 13.6 x 9.6 inches | executed in 2013 | frame

Sales price 1.200 € | 19% VAT included

lorch+seidel galerie | Tucholskystr. 38 | T + 49. 30.978 939 35 | info@lorch-seidel.de | di-fr tue-fri 13-19 h
contemporary art | D-10117 Berlin | M + 49. 176.235 265 65 | www.lorch-seidel.de | sa sat 12-18 h

SILVIA LEVENSON AND LUCA LANZI

Who in the world am I ?

Two artists exhibition | drawings, objects, installations | April 25 - June 13, 2015

Page 47 / 50



LUCA LANZI

Head

Drawing | mixed media on paper | 100 x 70 cm | 39.4 x 27.6 inches | H x W | executed in 2011

Sales price 2.700 € | 19% VAT included

lorch+seidel galerie | Tucholskystr. 38 | T + 49. 30.978 939 35 | info@lorch-seidel.de | di-fr tue-fri 13-19 h
contemporary art | D-10117 Berlin | M + 49. 176.235 265 65 | www.lorch-seidel.de | sa sat 12-18 h

SILVIA LEVENSON AND LUCA LANZI

Who in the world am I ?

Two artists exhibition | drawings, objects, installations | April 25 - June 13, 2015

Page 48 / 50



LUCA LANZI

Face | Dracula

Drawing | mixed media on paper | 70 x 50 cm | 27.6 x 19.7 inches | H x W | executed in 2011 | frame

Sales price 2.200 € | 19% VAT included

lorch+seidel galerie | Tucholskystr. 38 | T + 49. 30.978 939 35 | info@lorch-seidel.de | di-fr tue-fri 13-19 h
contemporary art | D-10117 Berlin | M + 49. 176.235 265 65 | www.lorch-seidel.de | sa sat 12-18 h

SILVIA LEVENSON

Silvia Levenson was born in Buenos Aires (Argentina) in 1957. In 1981, during the "disappearances" of the *Dirty War*, she immigrated to Italy. Silvia Levenson actually resides in Lesa (Italy) and Buenos Aires.

public collections

- Fine Art Museum | Houston | US-TX
- New Mexico Museum of Art | Santa Fe, US-NM
- Corning Museum of Glass | Rakow Commission | Corning, US-NY
- Bullseye Glass Company | Portland, US-OR
- Tikanoja Art Museum | Vaasa | FI
- Alexander Tutsek-Foundation | Munich
- Musée-Atelier du Verre | Sars-Poteries | FR
- Glasmusset Ebeltoft | DK
- Ernsting-Foundation | Coesfeld | DE
- Museo Leon Rigaulleau | Buenos Aires
- Coleccion Casas de las Americas | CU
- Comune di Castelvetro | Castelvetro | Modena | IT
- Fondazione Remotti | Camogli | IT
- Fondazione Banca San Gottardo | IT
- Museo di Storia ed Arte | Sondrio | IT
- Glas Museum Fraueneau | DE
- Museo del Vetro | Altare | IT

selected awards and residencies

- 2012 · Jury member | E-MERGE 2012 | Portland, US-OR
- 2011 · Next 100 years | Aalto University | Helsinki
- BeCon - Crossover | Portland, US-OR
- 2010 · Member of jury | Warm Glass Prize | Bristol | UK
- 2009 · Visiting artist | Australia National University | Canberra
- 2008 · Finalist | The Bombay Sapphire Prize
- 2005 · AiR | Corning Museum of Glass | Corning, US-NY
- 2004 · Rakow Commission Award | Corning Museum of Glass, Corning, US-NY
- 1998 · AiR | Bullseye Co. | Portland, US-OR
- 1996 · AiR | Musée Atelier de Verre | Sars Poteries | FR
- 1995 · AiR | Bullseye Co. | Portland, US-OR

work as curator

- 2011 · Principes, Princesas y Cenicientas | Complejo Municipal San Francisco | Berazategui | AR
- 2010 · Hi Honey, I'm Home | Broadfield House Glass Museum | UK
- 2008 · Memorie Sotto Vetro | Glasmusset Ebeltoft | DK
- 2006 · Levenson & Vetroricerca | Museo di Alcorcon | Madrid
- 2005 · Memorie Sotto Vetro | Bolzano | IT

LUCA LANZI

Luca Lanzi (born in Bologna in 1977) studied at the academies of fine arts in Bologna and Berlin-Weissensee. In 2005, he became a fellow of the Collegio Artistico Venturoli Foundation. Luca Lanzi lives in Bologna.

recognitions

- 2015 · Finalist | Premio Faenza | MIC - Museo Internazionale della Ceramica d'Arte Contemporanea | Faenza | IT
- 2011 · Finalist | Premio Basi | section drawing | Grosseto | IT
- Finalist | Premio Combat | section drawing | Livorno | IT
- 2005 · Post-graduate scholarship | Fondazione Collegio Artistico Venturoli

public collections

- 2011 · Collection of Drawings | Accademia delle Belle Arti | Bologna
- Collection of Contemporary Drawings | City of Modena | IT

publications

- 2012 · Spazio Magico | exhibition catalogue | Iorch+seidel | essays by Ian McEwan and Flaminio Gualdoni
- 2010 · Pagine da un Bestiario Fantastico - Italian Drawing in the XX and XXI Century | Galleria Civica | Modena | IT
- Gallerie al Museo | Museo Internazionale delle Ceramiche in Faenza | IT

selected solo exhibitions

- 2015 · Who in the world am I ? (with Silvia Levenson) | Iorch+seidel | Berlin
- 2013 · Last Toy | Iorch+seidel | Berlin
- 2012 · Spazio Magico | Iorch+seidel | Berlin
- Totem | Museo Civico Medievale | Bologna
- 2011 · Il viaggio a cavallo della papera | Iorch+seidel | Berlin
- 2010 · Feticci | L' Ariete artecontemporanea | Bologna
- Wir fahren mit der Luftbahn (with Benjamin Bohnsack) | Iorch+seidel | Berlin
- 2009 · Dolls | Gallery Lilly Zeligman | Naarden | NL
- Smooth and gentle (with Benjamin Bohnsack) | Iorch+seidel | Berlin
- 2007 · L'anima in gioco | Iorch+seidel | Berlin
- 2006 · Puppen - Feticci | Iorch+seidel | Berlin

selected group exhibitions

- 2015 · Premio Faenza | MIC - Museo Internazionale della Ceramica d'Arte Contemporanea | Faenza | IT
- 2014 · I Amsterdam You Berlin | Johannes Evangelist-Kirche | Berlin
- That's what I want | Iorch+seidel | Berlin
- 2013 · Cologne Paper Art Fair | with Iorch+seidel
- 2011 · Lascia un Segno | Pinacoteca Nazionale | Bologna
- Premio Combat | Bottini dell'olio | Livorno | IT
- 2010 · Gallerie al Museo | Museo Internazionale delle Ceramiche | Faenza | IT
- Pagine da un bestiario fantastico | Galleria Civica | Modena | IT
- 2009 · The wall of desire | Quadrum Saca | Bologna
- 2008 · Unicef chiama arte | Fondazione Cà la Ghironda | Bologna