

PURE EMOTION

Paintings by Benjamin Bohnsack – Sculptural Objects by Wilken Skurk

January 17 – March 1, 2014

Exposé | Page 1/24



lorch+seidel contemporary

lorch+seidel galerie | Tucholskystr. 38 | T +49. 30. 978 939 35 | info@lorch-seidel.de | di-fr tue-fri 13-19 h
contemporary art | D-10117 Berlin | F +49. 30. 978 939 37 | www.lorch-seidel.de | sa sat 12-18 h

PURE EMOTION

Paintings by Benjamin Bohnsack – Sculptural Objects by Wilken Skurk

January 17 – March 1, 2014

Exposé | Page 2/24

Über dunklem Rot liegt ein Hauch von Grün und Weiß. Einige wenige, mit Schwarz abgetönte Pinselstriche streifen die Oberfläche, wie eine zarte Berührung. In einem anderen Bild verdichten sich Nebel aus Grau, Oliv, Blau und Violett zu einem farbintensiven Focus, einem schillernden Pfauenauge gleich. Benjamin Bohnsacks Bilder entstehen in mehreren Arbeitsgängen. Wenn Farben und Pinsel schon in Gebrauch waren und bereit liegen, wenn Stimmung und Musik zusammenpassen, dann kann die entscheidende Phase eintreten und das Bild seinen Abschluss finden. Genau diesen Augenblick gilt es zu erkennen und festzuhalten.

Über farblosen, nur schwach blau oder grün schimmernden Glasblöcken erheben sich freie Formen aus Metall. Ausgehend von geometrischen Elementen scheinen diese unregelmäßigen Metallkörper der organischen Form entgegenzustreben. Ihre Flächen sind voller Unebenheiten, ihre Kanten eher krumm als gerade. Im Unterschied zu den gegossenen Glasblöcken sind die Metallkörper von Hand geformt. Münzgroß gestanzte Stahlblechscheiben sind das Ausgangsmaterial, Schweißen die Technik. Die Objekte von Wilken Skurk spielen mit Material und Form, Ruhe und Bewegung, Schwerkraft und Balance.

Man kann sich den Werken von Benjamin Bohnsack und Wilken Skurk durch Beschreibung nähern. Am Ende stellt man fest: Diese Arbeiten wollen nichts abbilden. Sie sind einfach das, was der Betrachter in ihnen sieht. Sich darauf einzulassen, ist die Chance, dem eigenen Gefühl Raum zu geben.

Laid out on a dark red ground is just a hint of green and white. A few brushstrokes, tinged with black, graze the surface in a gentle caress. In another painting, a grey, olive, blue, and violet fog condenses into a vividly chromatic focal area that resembles an eye on a peacock's tail. Benjamin Bohnsack produces these works in multiple stages. Once paint and brushes stand at the ready and have been set into motion, once music and mood converge, the decisive phase can commence, and the painting is able to arrive at its completion. Precisely this moment must be recognized and captured, preserved.

Rising above nearly colorless, pale blue and green blocks of shimmering glass are polyform metal shapes. With their point of departure in geometric elements, these irregular metal shapes seem to strive toward organicity. Their surfaces are characterized by uniform unevenness, their edges curved rather than straight. Unlike the cast glass blocks, the metal shapes are formed by hand. The source material consists of coin-sized, stamped pieces of sheet metal; the technique is welding. Wilken Skurk's sculptural objects play with the contrasts of material and form, with motion and stillness, gravity and balance.

The works by Benjamin Bohnsack and Wilken Skurk are approachable via description. Ultimately, it becomes clear that they make no attempt at depicting anything outside themselves. In essence, they simply are whatever the individual viewer perceives them to be. An engagement with each is an opportunity to open up a space for one's own emotions.

PURE EMOTION

Paintings by Benjamin Bohnsack – Sculptural Objects by Wilken Skurk

January 17 – March 1, 2014

Exposé | Page 3/24

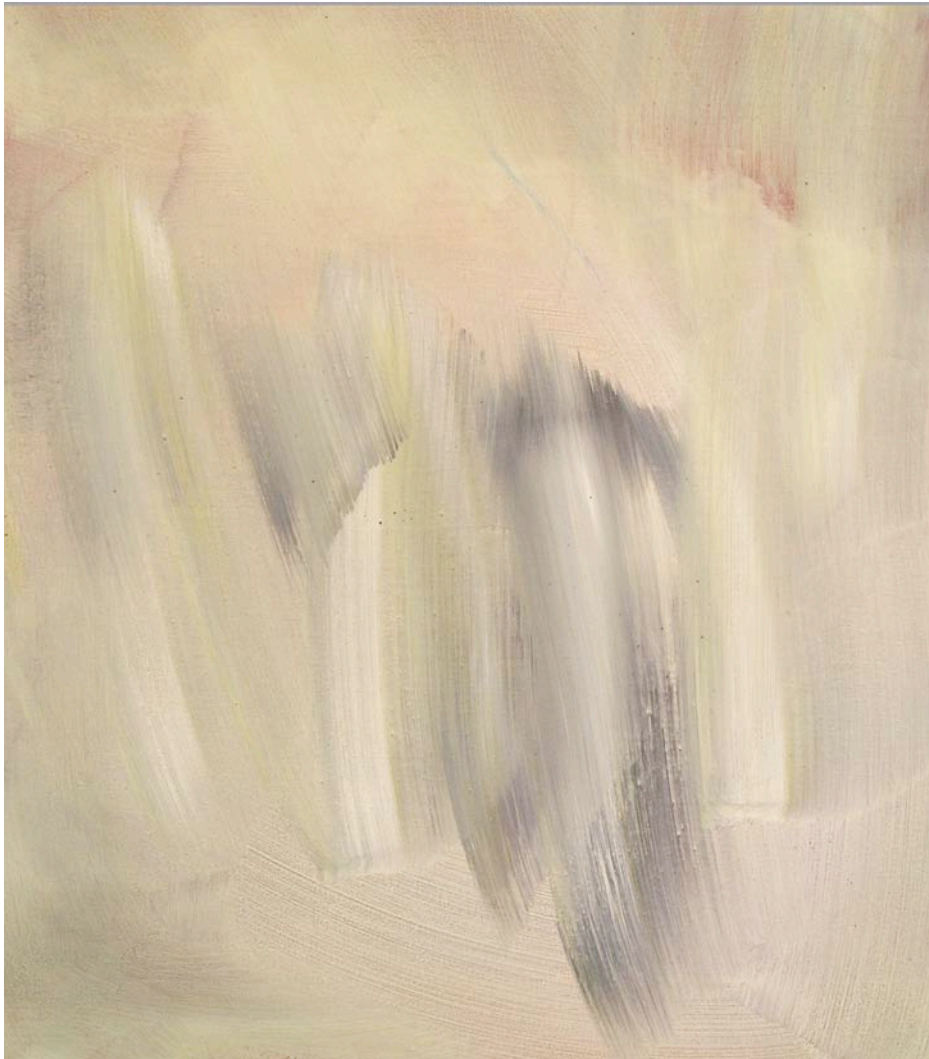


PURE EMOTION

Paintings by Benjamin Bohnsack – Sculptural Objects by Wilken Skurk

January 17 – March 1, 2014

Exposé | Page 4/24



BENJAMIN BOHNSACK

Untitled | Gentle Caress

Tempera on canvas

80 x 70 cm | 31.5 x 27.6 inches

Executed in 2008

PURE EMOTION

Paintings by Benjamin Bohnsack – Sculptural Objects by Wilken Skurk

January 17 – March 1, 2014

Exposé | Page 5/24

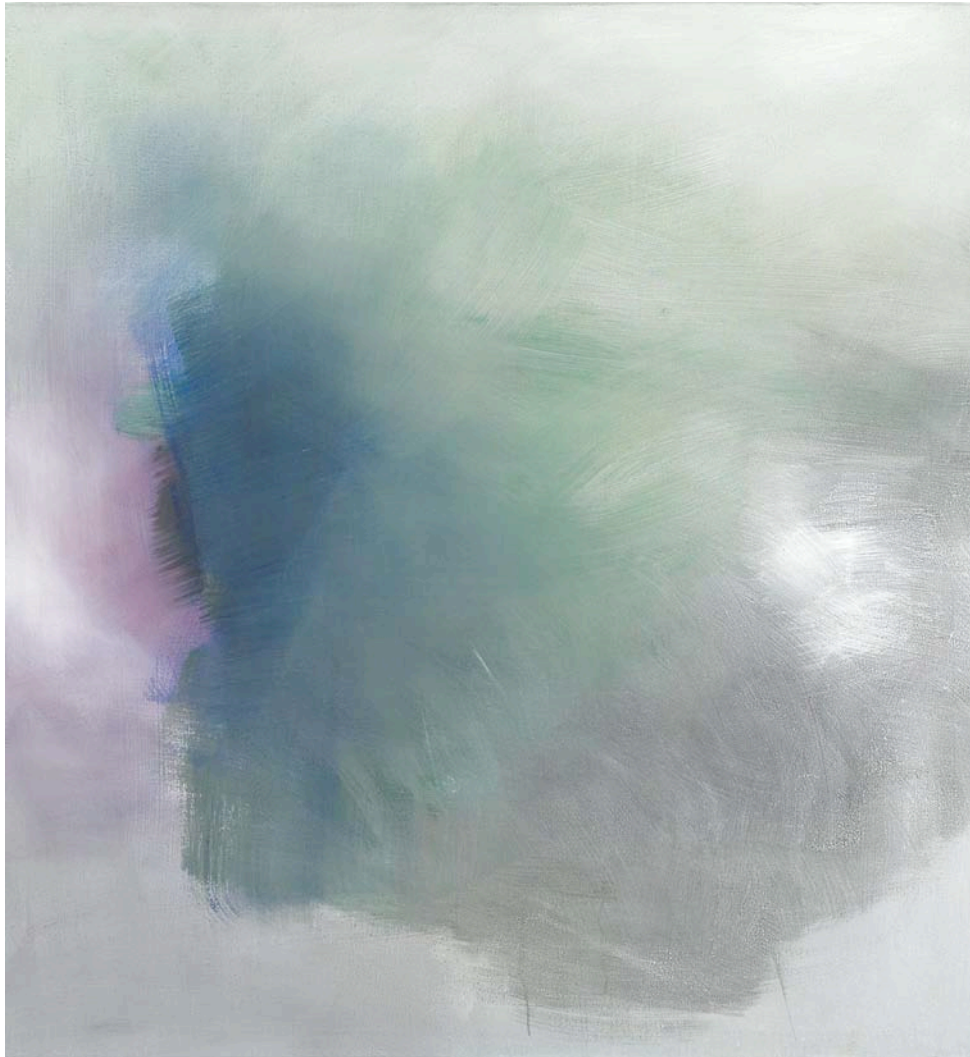


PURE EMOTION

Paintings by Benjamin Bohnsack – Sculptural Objects by Wilken Skurk

January 17 – March 1, 2014

Exposé | Page 6/24



BENJAMIN BOHNSACK

Untitled | Peacock's Eye

Tempera on canvas

150 x 140 cm | 59.1 x 55.1 inches

Executed in 2012

PURE EMOTION

Paintings by Benjamin Bohnsack – Sculptural Objects by Wilken Skurk

January 17 – March 1, 2014

Exposé | Page 7/24



WILKEN SKURK

Heiner | view 01

Edition 1/1 | Cast glass and welded sheet steel, spray-painted, burnished

60 x 45 x 70 cm | 23.6 x 17.7 x 27.6 inches | L x W x H

Executed in 2012

PURE EMOTION

Paintings by Benjamin Bohnsack – Sculptural Objects by Wilken Skurk

January 17 – March 1, 2014

Exposé | Page 8/24



WILKEN SKURK

Heiner | view 02

Edition 1/1 | Cast glass and welded sheet steel, spray-painted, burnished

60 x 45 x 70 cm | 23.6 x 17.7 x 27.6 inches | L x W x H

Executed in 2012

PURE EMOTION

Paintings by Benjamin Bohnsack – Sculptural Objects by Wilken Skurk

January 17 – March 1, 2014

Exposé | Page 9/24



WILKEN SKURK

Heiner | view 03

Edition 1/1 | Cast glass and welded sheet steel, spray-painted, burnished

60 x 45 x 70 cm | 23.6 x 17.7 x 27.6 inches | L x W x H

Executed in 2012

PURE EMOTION

Paintings by Benjamin Bohnsack – Sculptural Objects by Wilken Skurk

January 17 – March 1, 2014

Exposé | Page 10/24



PURE EMOTION

Paintings by Benjamin Bohnsack – Sculptural Objects by Wilken Skurk

January 17 – March 1, 2014

Exposé | Page 11/24



BENJAMIN BOHNSACK

Untitled | Light and Dark Blue
Tempera on canvas
85 x 90 cm | 33.5 x 35.4 inches
Executed in 2008

PURE EMOTION

Paintings by Benjamin Bohnsack – Sculptural Objects by Wilken Skurk

January 17 – March 1, 2014

Exposé | Page 12/24



WILKEN SKURK

Lupus | view 01

100 x 100 x 130 cm | 39.4 x 39.4 x 51.2 inches

Edition 1/2 | cast glass and welded sheet steel, spray-painted and burnished | executed in 2013

Edition 2/2 | for outdoor-installation | cast glass and bronze, patinated | to be executed

PURE EMOTION

Paintings by Benjamin Bohnsack – Sculptural Objects by Wilken Skurk

January 17 – March 1, 2014

Exposé | Page 13/24



WILKEN SKURK

Lupus | view 02

100 x 100 x 130 cm | 39.4 x 39.4 x 51.2 inches

Edition 1/2 | cast glass and welded sheet steel, spray-painted and burnished | executed in 2013

Edition 2/2 | for outdoor-installation | cast glass and bronze, patinated | to be executed

PURE EMOTION

Paintings by Benjamin Bohnsack – Sculptural Objects by Wilken Skurk

January 17 – March 1, 2014

Exposé | Page 14/24



WILKEN SKURK

Lupus | view 03

100 x 100 x 130 cm | 39.4 x 39.4 x 51.2 inches

Edition 1/2 | cast glass and welded sheet steel, spray-painted and burnished | executed in 2013

Edition 2/2 | for outdoor-installation | cast glass and bronze, patinated | to be executed

PURE EMOTION

Paintings by Benjamin Bohnsack – Sculptural Objects by Wilken Skurk

January 17 – March 1, 2014

Exposé | Page 15/24



PURE EMOTION

Paintings by Benjamin Bohnsack – Sculptural Objects by Wilken Skurk

January 17 – March 1, 2014

Exposé | Page 16/24



BENJAMIN BOHNSACK

Untitled | Orange Green White

Tempera on canvas

150 x 270 cm | 59 x 106.3 inches

Executed in 2012

PURE EMOTION

Paintings by Benjamin Bohnsack – Sculptural Objects by Wilken Skurk

January 17 – March 1, 2014

Exposé | Page 17/24



WILKEN SKURK

Radar | view 01

100 x 100 x 165 cm | 39.4 x 39.4 x 65 inches

Edition 1/2 | cast glass and welded sheet steel, spray-painted and burnished | executed in 2013

Edition 2/2 | for outdoor-installation | cast glass and bronze, patinated | to be executed

PURE EMOTION

Paintings by Benjamin Bohnsack – Sculptural Objects by Wilken Skurk

January 17 – March 1, 2014

Exposé | Page 18/24



WILKEN SKURK

Radar | view 02

100 x 100 x 165 cm | 39.4 x 39.4 x 65 inches

Edition 1/2 | cast glass and welded sheet steel, spray-painted and burnished | executed in 2013

Edition 2/2 | for outdoor-installation | cast glass and bronze, patinated | to be executed

PURE EMOTION

Paintings by Benjamin Bohnsack – Sculptural Objects by Wilken Skurk

January 17 – March 1, 2014

Exposé | Page 19/24



PURE EMOTION

Paintings by Benjamin Bohnsack – Sculptural Objects by Wilken Skurk

January 17 – March 1, 2014

Exposé | Page 20/24



BENJAMIN BOHNSACK

Untitled | Large Green 01

Tempera on canvas

140 x 230 cm | 55.1 x 90.6 inches

Executed in 2012

PURE EMOTION

Paintings by Benjamin Bohnsack – Sculptural Objects by Wilken Skurk

January 17 – March 1, 2014

Exposé | Page 21/24



WILKEN SKURK

Jens and Duane | view 01

Edition 1/1 | Cast glass and welded sheet steel, spray-painted, burnished
25 x 20 x 32 cm | 9.8 x 7.9 x 12.6 inches | L x W x H

Executed in 2013

PURE EMOTION

Paintings by Benjamin Bohnsack – Sculptural Objects by Wilken Skurk

January 17 – March 1, 2014

Exposé | Page 22/24



WILKEN SKURK

Jens and Duane | view 02

Edition 1/1 | Cast glass and welded sheet steel, spray-painted, burnished
25 x 20 x 32 cm | 9.8 x 7.9 x 12.6 inches | L x W x H

Executed in 2013

PURE EMOTION

Paintings by Benjamin Bohnsack – Sculptural Objects by Wilken Skurk

January 17 – March 1, 2014

Exposé | Page 23/24

BENJAMIN BOHNSACK

Benjamin Bohnsack (born in Münster/Germany in 1975) studied painting at the Academies of Fine Arts in Münster and Düsseldorf. In 2004 his professor Siegfried Anzinger awarded him the title of "Meisterschüler".

Benjamin Bohnsack resides in Düsseldorf.

Solo Exhibitions

- 2014 · Pure Emotion (with Wilken Skurk) | Iorch+seidel | Berlin
- 2012 · What colour is the air? (with Wilken Skurk) | Iorch+seidel | Berlin
- Darling Buds of June | Städtische Bühnen | Münster | DE
- 2011 · Giganten (with Wilken Skurk) | Iorch+seidel | Berlin
- 2010 · Wir fahren mit der Luftbahn (with Luca Lanzi) | Iorch+seidel | Berlin
- 2009 · Smooth and Gentle (with Luca Lanzi) | Iorch+seidel | Berlin
- 2008 · Pastry Park | Iorch+seidel galerie | Berlin
- 2007 · Glatte Lügen (with Maria Jörgens) | Iorch+seidel | Berlin
- 1999 · Kill | Gleis 22 | Münster | DE
- Farbe 99 | Fachwerk | Münster | DE

Group Exhibitions

- 2011 · Art Benefit for Japan | Williamsburg Art & Historical Center | Brooklyn, NY
- 2010 · 11th Annual WAH Salon Art Club Show | Williamsburg Art & Historical Center | Brooklyn, NY
- und immer fehlt mir was und das quält mich | Salon Schmitz | Cologne
- 2009 · Gastspiel | Kunstbrücke | Innsbruck | AT
- Graf Icken de Dorf | Brause | Düsseldorf
- 2008 · 3 Artists of the Gallery | Iorch+seidel | Berlin
- 2007 · und immer fehlt mir was und das quält mich | Werkstatt | Graz | AT
- Trendwände | Kunstraum | Düsseldorf
- 2006 · Wunderland – Malerei aus der Klasse Siegfried Anzinger | WGZ Bank | Düsseldorf
- Las Malomat | Iorch+seidel | Berlin
- Bretter, die die Welt bedeuten | acapulco | Düsseldorf
- 2005 · Artists of the Gallery | Iorch+seidel | Berlin
- Hoch stand der Sandorn | Iorch+seidel | Berlin
- Kanon menschlicher Proportionen | Hinterconti | Hamburg
- 2004 · Hab Acht | Galerie Charlotte Sailer | Wissen/Sieg | DE
- 2003 · Tierische Begegnungen | Galerie Christine Hölz | Düsseldorf
- Catch the Pink Bubble | Räume für Kunst | Braunschweig | DE
- 2002 · Kontakte | Galerie Christine Hölz | Düsseldorf
- Timewalk | Kunstraum | Düsseldorf
- 2000 · Klasse Anzinger | Artoll-Labor e. V. | Bedburg-Hau | DE
- Avantgarde – The Next Generation | Orangerie am Schloss Rheda | DE

Publications

- 2009 · Gastspiel | exhibition catalogue | Kunstbrücke Innsbruck | Austria
- 2007 · Völlig frei vom Figurativen | DIE WELT | Berliner Kunstmarkt | September 21, 2007
- Glatte Lügen | Faltblatt zur Ausstellung | Iorch+seidel | Berlin
- 2006 · Wunderland – Malerei aus der Klasse Anzinger | exhibition catalogue | WGZ Bank AG
- Stimmung im Sandorn | Kulturkalender | Berliner Zeitung | April 14, 2006

PURE EMOTION

Paintings by Benjamin Bohnsack – Sculptural Objects by Wilken Skurk

January 17 – March 1, 2014

Exposé | Page 24/24

WILKEN SKURK

Wilken Skurk (born in Dresden in 1966) studied sculpture at the Academy of Fine Arts in Berlin-Charlottenburg. In 2001 his professor David Evisons awarded him the title of „Meisterschüler“. Wilken Skurk resides in Berlin.

Public Collections

Musée du Verre | Sars-Poteries | FR
Ernsting Foundation | Coesfeld-Lette | DE
Glasmuseum Frauenau | DE
Kunstsammlungen der Veste Coburg | DE
Alexander Tutsek Foundation | München
Glasmuseum Hentrich | museum kunst palast | Düsseldorf

Recognitions, Awards

2006 · Special Prize of the Alexander Tutsek-Foundation | Coburg Glass Prize
2004 · Supporting Award | Jutta Cuny-Franz Prize
2003 · Scholarship for Sculpture | Kunsthaus Meinersen | DE
2002 · Artist Support | Senate of Berlin
· Honorary Diploma | Jutta Cuny-Franz Prize

Art in Public Space, Competitions, Projects

2010 · Gläserne Gärten | Frauenau | DE
2000 · Corner | Sculpture for Memorial Koppenplatz 6 | Berlin

Selected Solo Exhibitions

2012 · What colour ist he air? (with Benjamin Bohnsack) | Iorch+seidel | Berlin
2011 · Giganten (with Benjamin Bohnsack) | Iorch+seidel | Berlin
2009 · Incantato | Galerie Rossella Junck | Berlin
2008 · Galerie Rossella Junck | Berlin
2007 · Galerie B | Baden-Baden | DE
2006 · Galerie Kunstbahnhof | Dresden
2005 · Galerie Breitengraser | Berlin
2003 · Galerie sphn | Berlin

Selected Group Exhibitions

2013 · Finalists of the Coburg Glass Prize | Kunstsammlungen der Veste Coburg | DE
2012 · Verriales | Galerie Serge Lechaczynski | Biot | FR
· Inside – Outside | Glasmuseum Frauenau | DE
2011 · New Acquisitions | Ernsting Foundation | Coesfeld-Lette | DE
2010 · A Gathering of the Tribes | Universität der Künste | Berlin
· Frozen in Tension | Alexander Tutsek-Foundation | Munich
2008 · Kunstmuseum Bornholm | Denmark
· Berlin 2 | Kunstverein Regensburg | DE
· Bombay Sapphire Prize | exhibition of the finalists | Milan
2007 · Galerie Rossella Junck | Berlin/Venezia
2006 · Coburg Glass Prize | Veste Coburg | DE
2005 · Kunstverein Mainz | DE