



Einfahrt
verboten

P

274

Marta Klonowska

SELECTED WORKS

lorch+seidel temporary showroom

Potsdamer Str. 93 | 10785 Berlin

April 23 – May 29, 2021



lorch+seidel contemporary

Konstanzer Str. 9 | T + 49 (0)30 978 939 35 | info@lorch-seidel.de
D-10707 Berlin | M + 49 (0)176 235 265 65 | www.lorch-seidel.de



MARTA KLONOWSKA

Demon
after Giotto di Bondone

Ensemble of demon sculpture and 2 prints
2018

Demon sculpture | glass on metal framework
H x L x W
105 x 120 x 100 cm | 41.3 x 47.2 x 39.4 inches

Large inkjet print on paper | complete view
H x W
Image | 100 x 90,5 cm | 39.4 x 35.6 inches
Frame | 135 x 125 cm | 53.1 x 49.2 inches

Small inkjet print on paper | detail view
H x W
Image | 30 x 22 cm | 11.8 x 7.9 inches
Frame | 46,5 x 54 cm | 18.3 x 21.3 inches



MARTA KLONOWSKA

Demon
after Giotto di Bondone

Ensemble of demon sculpture and 2 prints
2018

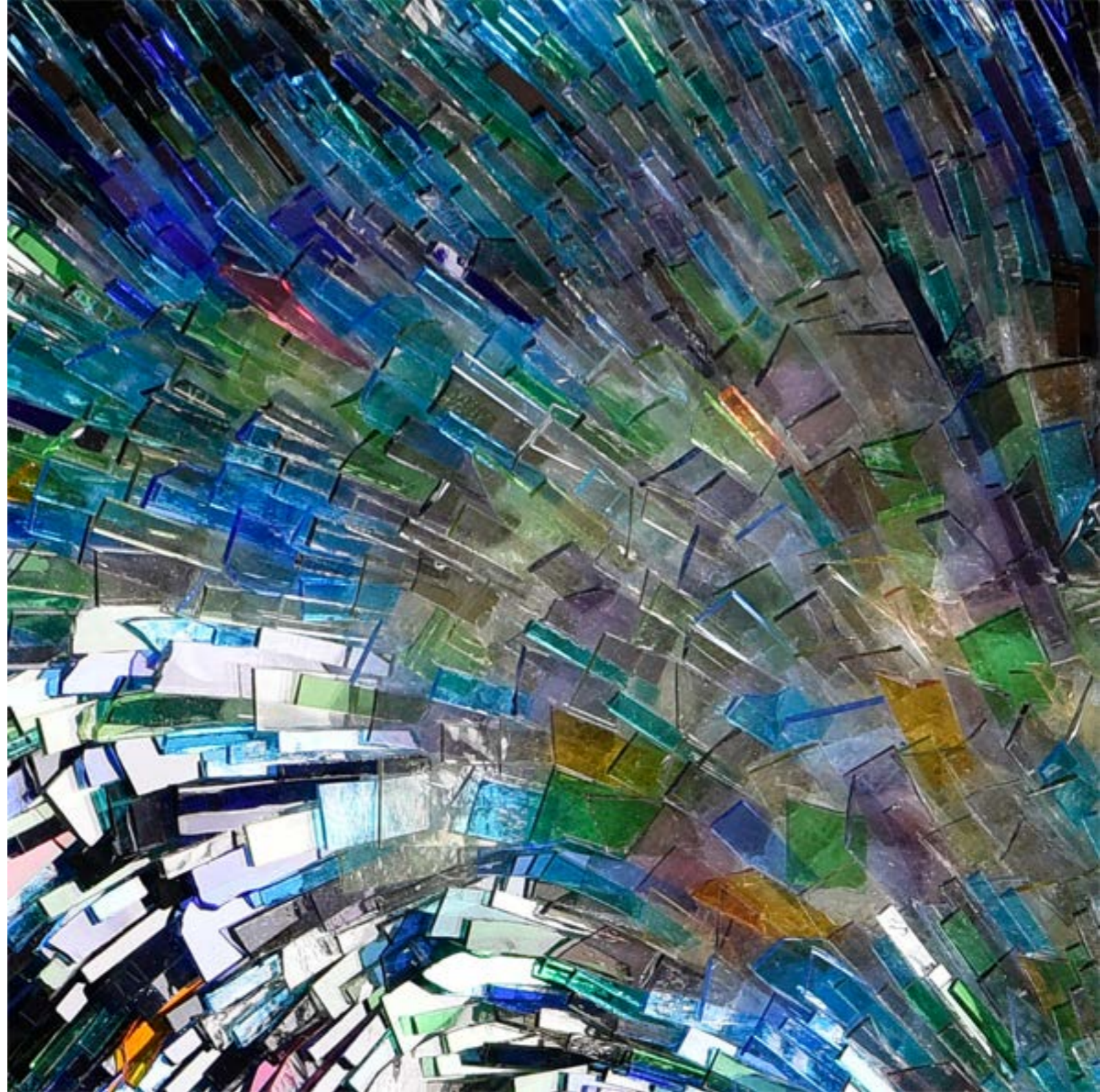
Demon sculpture | glass on metal framework
H x L x W
105 x 120 x 100 cm | 41.3 x 47.2 x 39.4 inches

Large inkjet print on paper | complete view
H x W
Image | 100 x 90,5 cm | 39.4 x 35.6 inches
Frame | 135 x 125 cm | 53.1 x 49.2 inches

Small inkjet print on paper | detail view
H x W
Image | 30 x 22 cm | 11.8 x 7.9 inches
Frame | 46,5 x 54 cm | 18.3 x 21.3 inches









MARTA KLONOWSKA

Demon
after Giotto di Bondone

Ensemble of demon sculpture and 2 prints
2018

Demon sculpture | glass on metal framework
H x L x W
105 x 120 x 100 cm | 41.3 x 47.2 x 39.4 inches

Large inkjet print on paper | complete view
H x W
Image | 100 x 90,5 cm | 39.4 x 35.6 inches
Frame | 135 x 125 cm | 53.1 x 49.2 inches

Small inkjet print on paper | detail view
H x W
Image | 30 x 22 cm | 11.8 x 7.9 inches
Frame | 46,5 x 54 cm | 18.3 x 21.3 inches





MARTA KLONOWSKA

Demon
after Giotto di Bondone

Ensemble of demon sculpture and 2 prints
2018

Demon sculpture | glass on metal framework
H x L x W
105 x 120 x 100 cm | 41.3 x 47.2 x 39.4 inches

Large inkjet print on paper | complete view

H x W

Image | 100 x 90,5 cm | 39.4 x 35.6 inches

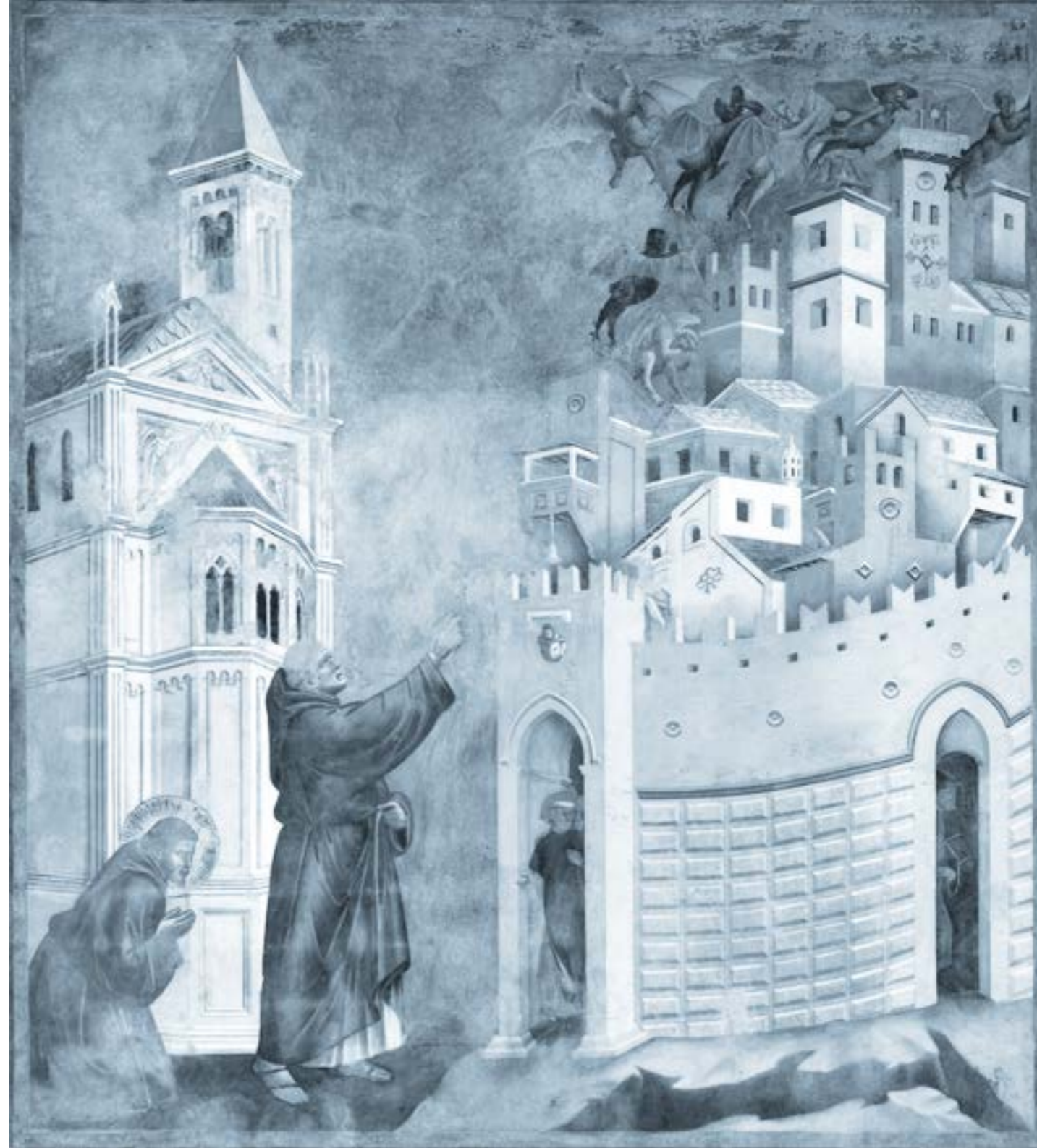
Frame | 135 x 125 cm | 53.1 x 49.2 inches

Small inkjet print on paper | detail view

H x W

Image | 30 x 22 cm | 11.8 x 7.9 inches

Frame | 46,5 x 54 cm | 18.3 x 21.3 inches





Marta Klonowska

Koi
after Utagawa Hiroshige

Ensemble of fish sculpture and print
2021

Koi sculpture | glass on metal framework
H x L x W
50 x 100 x 50 cm | 19.7 x 39.4 x 19.7 inches

Inkjet print on paper
H x W
Image | 17 x 23 cm | 6.7 x 9.1 inches
Frame | 33,5 x 39,5 cm | 13.2 x 15.6 inches







Marta Klonowska

Koi
after Utagawa Hiroshige

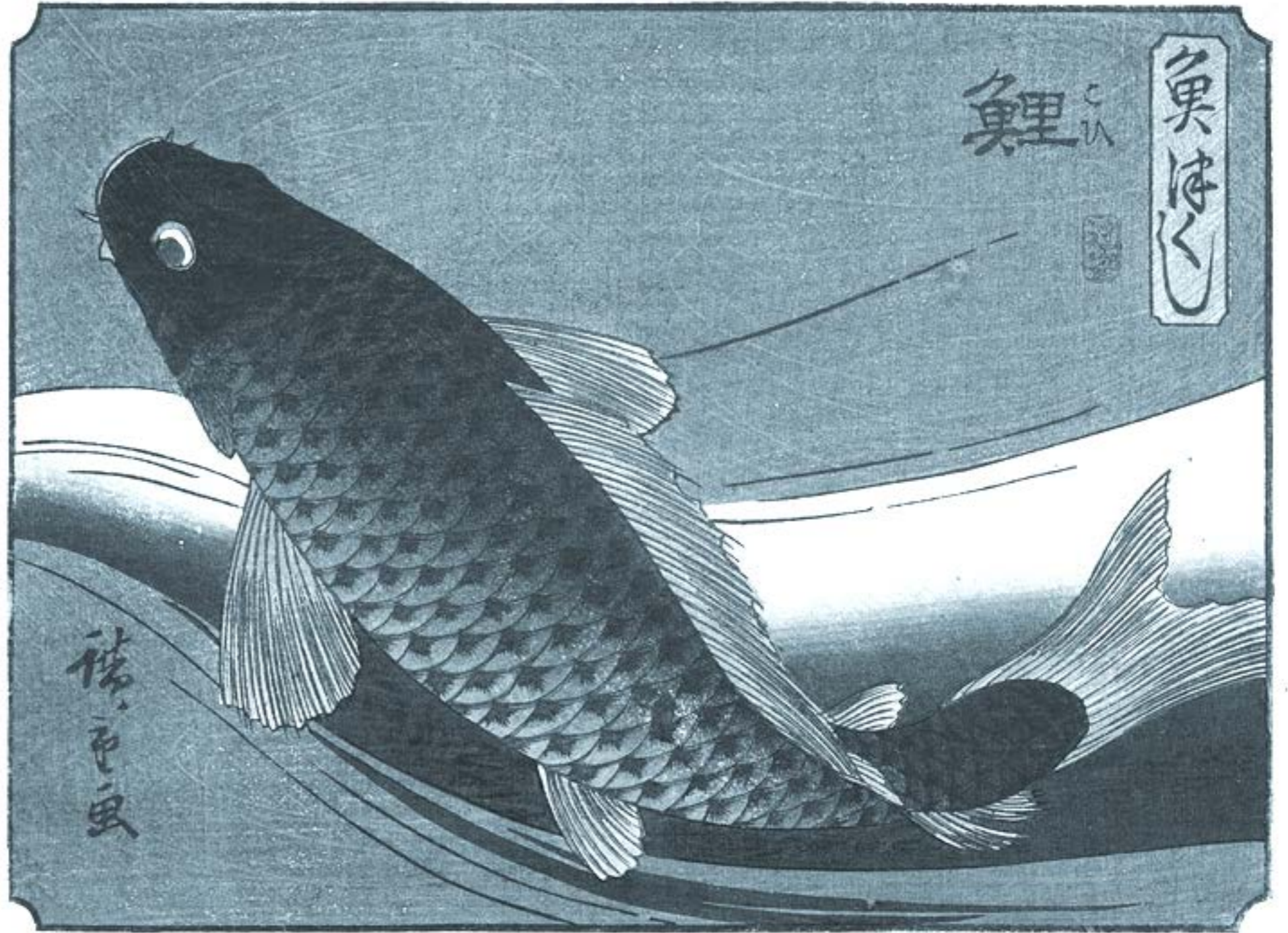
Ensemble of fish sculpture and print
2021

Koi sculpture | glass on metal framework
H x L x W
50 x 100 x 50 cm | 19.7 x 39.4 x 19.7 inches

Inkjet print on paper
H x W
Image | 17 x 23 cm | 6.7 x 9.1 inches
Frame | 33,5 x 39,5 cm | 13.2 x 15.6 inches



Marta Klonowska

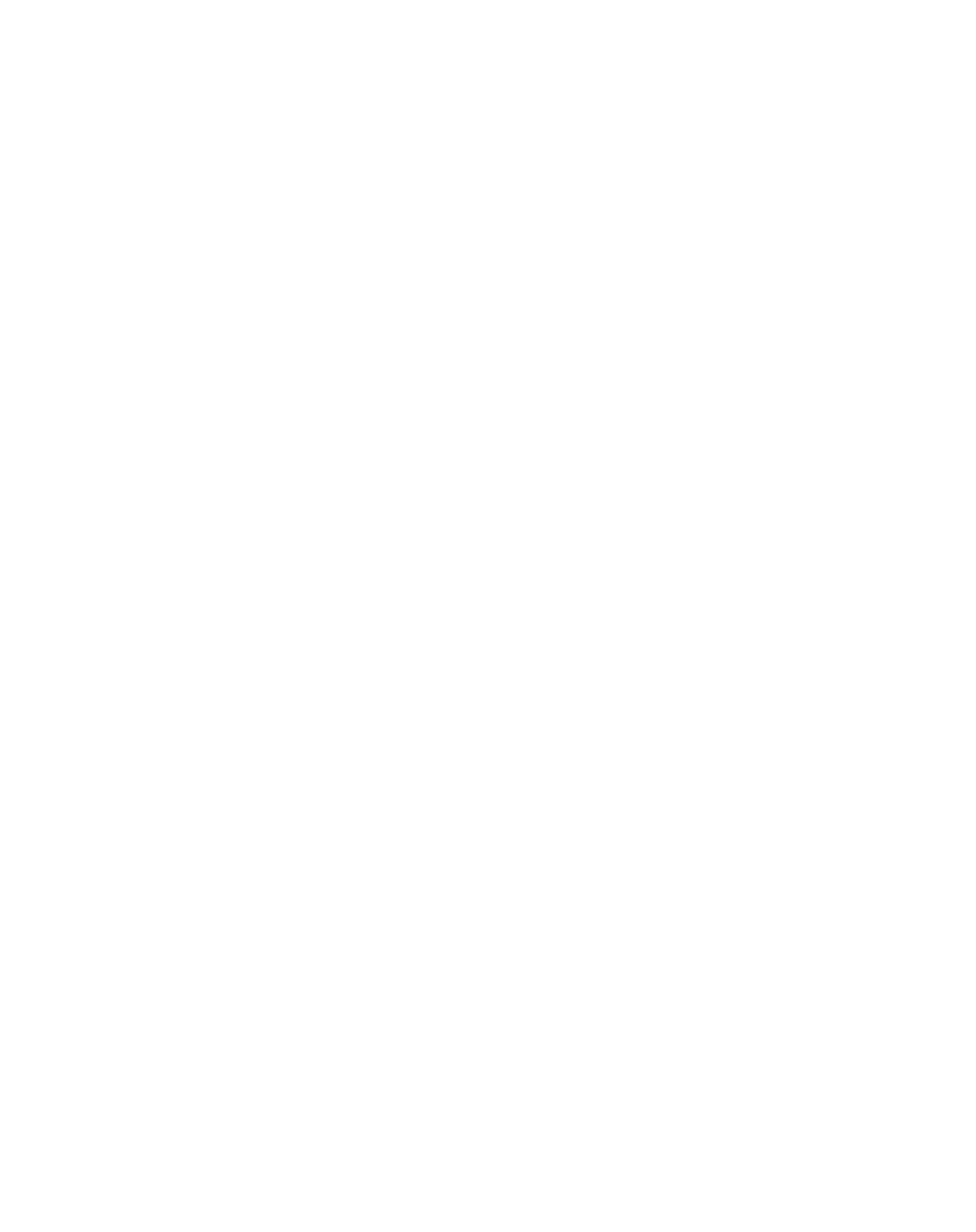


Koi
after Utagawa Hiroshige

Ensemble of fish sculpture and print
2021

Koi sculpture | glass on metal framework
H x L x W
50 x 100 x 50 cm | 19.7 x 39.4 x 19.7 inches

Inkjet print on paper
H x W
Image | 17 x 23 cm | 6.7 x 9.1 inches
Frame | 33,5 x 39,5 cm | 13.2 x 15.6 inches



MARTA KLONOWSKA

King-Charles-Spaniel
after Johann Friedrich Wegener

Ensemble of dog sculpture and print
2019

Spaniel sculpture | glass on metal framework
H x L x W
55 x 88 x 34 cm | 21.7 x 34.6 x 13.4 inches

Inkjet print on paper
H x W
Image | 58 x 76 cm | 22.8 x 29.9 inches
Frame | 83 x 101 cm | 32.7 x 39.8 inches







MARTA KLONOWSKA

King-Charles-Spaniel
after Johann Friedrich Wegener

Ensemble of dog sculpture and print
2019

Spaniel sculpture | glass on metal framework
H x L x W
55 x 88 x 34 cm | 21.7 x 34.6 x 13.4 inches

Inkjet print on paper
H x W
Image | 58 x 76 cm | 22.8 x 29.9 inches
Frame | 83 x 101 cm | 32.7 x 39.8 inches





MARTA KLONOWSKA

Jeune Femme en Robe à la Polonoise
after Pierre-Thomas LeClerc

Ensemble of dog sculpture and print
2019

Poodle sculpture | glass on metal framework
H x L x W
75 x 73 x 35 cm | 29.5 x 28.7 x 13.8 inches

Inkjet print on paper
H x W
Image | 25 x 16,5 cm | 9.8 x 6.5 inches
Frame | 50 x 41 cm | 19.7 x 16.1 inches







MARTA KLONOWSKA

Jeune Femme en Robe à la Polonoise
after Pierre-Thomas LeClerc

Ensemble of dog sculpture and print
2019

Poodle sculpture | glass on metal framework
H x L x W
75 x 73 x 35 cm | 29.5 x 28.7 x 13.8 inches

Inkjet print on paper
H x W
Image | 25 x 16,5 cm | 9.8 x 6.5 inches
Frame | 50 x 41 cm | 19.7 x 16.1 inches



Jeune femme en robe à la Polonoise avec un grand mantelet blanc à la mode: elle est coiffée d'un chapeau en pannel garni de blonde rabattue tout autour, et fermée d'un bouquet de plumes.

MARTA KLONOWSKA

Marta Klonowska, born in Warsaw in 1964, studied at the Academies of Fine Arts in Wroclaw (1987-89) and Düsseldorf (1989-97). In 1997, her professor A. R. Penck awarded her the post-graduate degree of *Meisterschülerin*.

Marta Klonowska lives in Poland.

Public Collections

- Barbara Achilles Foundation | Hamburg | DE
- Toyama Glass Art Museum | Toyama | JP
- Alexander Tutsek Foundation | Munich | DE
- The Corning Museum of Glass | Corning, NY | USA
- Kunstsammlungen der Veste Coburg | DE
- Glas-Museum Hentrich | museum kunst palast | Düsseldorf | DE
- Glas-Museum Alter Hof Herding | Ernsting Foundation | Coesfeld-Lette | DE
- Musée-Atelier du Verre | Sars-Poteries | FR

Recognitions

- 2006 · The Bombay Sapphire Prize - Final Exhibition | London
- 2005 · Jutta-Cuny-Franz Prize | Honorary Diploma | Düsseldorf
- 2002 · Artist in residence | Akerby Skulpturpark | SE

Publications

- 2019 · Istota | Toyama Glass Art Museum | Toyama | JP
- 2014 · Lady Walking Her Dog | Daisuke Murata | The Window of Arts Magazine | Japan | Nov 2014
- 2013 · Nature Morte | Michael Petry | Thames & Hudson | London
- 2011 · Materials Revisited | Museum für Angewandte Kunst Frankfurt | jovis Verlag GmbH
- 2010 · Walking the dog | Kunsthalle Dominikanerkirche Osnabrück | Rasch Verlag
- 2009 · Cocker Spaniel and Other Tools for International Understanding | Kunsthalle zu Kiel | DuMont
- 2008 · Streichelzoo | Helmut Ricke | museum kunst palast | Düsseldorf
- 2006 · Marta Klonowska | David Revere McFadden | The Urban Glass Art Quarterly | Summer Edition

Solo Exhibitions

- 2021 · Selected Works | Iorch+seidel | Berlin
- 2019 · Istota | Toyama Glass Art Museum | Toyama | JP
- 2015 · Lion Dog Meets Garden Dog | Iorch+seidel | Berlin
- 2013 · Puszek and Friends | Iorch+seidel | Berlin
- 2009 · Geschöpfe (with Sibylle von Preussen) | Iorch+seidel | Berlin
 - Domestic Animals | The Finnish Glass Museum | Riihimäki | FN
- 2008 · Streichelzoo | museum kunst palast | Düsseldorf | DE
- 2005 · Portraits und Tierskizzen | Iorch+seidel | Berlin
- 2003 · dogwalk | Iorch+seidel | Berlin
- 2002 · Akerby Skulpturpark | SE
- 1997 · Cité Internationale des Arts | Paris

Group Exhibitions

- 2016 · Glass Now! | Galerie Handwerk | Munich | DE
 - Triennale Européene de la Céramique et du Verre | Anciens Abattoirs | Mons | BE
 - Wie es uns gefällt | Herbert Gerisch-Foundation | Neumünster | DE
- 2015 · Inaugural exhibition | Toyama Glass Art Museum | JP
- 2012 · European Glass Context | Bornholm Art Museum | DK
 - Glasstress NY - New Art from the Venice Biennales | Museum of Arts & Design New York
 - In the Name of Love | Alexander Tutsek-Foundation | Munich
- 2011 · Materials Revisited | Museum für Angewandte Kunst | Frankfurt/Main | DE
 - Glasstress | Palazzo Cavalli Franchetti | Venice | IT
- 2010 · Walking the dog | Kunsthalle Osnabrück | DE
- 2009 · Cocker Spaniel and other Tools ... | Kunsthalle Kiel | DE
- 2007 · Audacity in Art | Orlando Museum of Art | USA
- 2006 · The Bombay Sapphire Prize – Final Selection | The Bombay Sapphire Foundation | London
- 2004 · Glas im Großformat | Glasmuseum Alter Hof Herding | Coesfeld-Lette | DE

Marta Klonowska

SELECTED WORKS

lorch+seidel temporary showroom

Potsdamer Str. 93 | 10785 Berlin

April 23 – May 29, 2021



lorch+seidel contemporary

Konstanzer Str. 9 | T + 49 (0)30 978 939 35 | info@lorch-seidel.de
D-10707 Berlin | M + 49 (0)176 235 265 65 | www.lorch-seidel.de