



# ISTOTA

**Marta Klonowska**

Solo Exhibition

**Toyama Glass Art Museum**

April 27 - September 23, 2019

**Curated by**

Maho Asada and Haruka Nakashima



**lorch+seidel contemporary**

Konstanzer Str. 9 | T + 49 (0)30 978 939 35 | [info@lorch-seidel.de](mailto:info@lorch-seidel.de)  
D-10707 Berlin | M + 49 (0)176 235 265 65 | [www.lorch-seidel.de](http://www.lorch-seidel.de)



## LIST OF EXHIBITS

N°	title	sculpture	shoes	print	executed
01	King-Charles-Spaniel after Johann Friedrich Wegener	dog	-	print on paper	2019
02	Jeune Femme en Robe à la Polonoise after Pierre-Thomas LeClerc	dog	-	print on paper	2019
03	Carp after Hiroshige Utagawa	fish	-	print on paper	2018
04	Demon after Giotto di Bondone	demon	-	2 prints on paper	2018
05	Demoiselle en Polonoise after Claude-Louis Desrais	dog	pair of shoes	print on paper	2014
06	Baltasar Carlos as a Hunter after Diego Velázquez	2 dogs	pair of boots	print on canvas	2003
07	The Temptation of Saint Anthony after Frans Francken the Younger	flute player	-	print on paper	2008
08	Venus and Adonis after Peter Paul Rubens	dog	-	print on canvas	2008
09	Baron	dog	-	4 drawings on paper	2012
10	La Marquesa de Pontejos after Francisco de Goya	dog	pair of shoes	print on paper	2009
11	The Morning Walk after Thomas Gainsborough	dog	pair of shoes + single shoe	print on canvas	2004
12	Les Jeunes after Francisco de Goya	dog	pair of shoes	print on paper	2003
13	Maria Teresa de Borbón y Vallabriga after Francisco de Goya	dog	pair of shoes	print on paper	2003
14	The Duchess of Alba (White) after Francisco de Goya	dog	-	print on paper	2003
15	Landscape with Apollo and Cumean Sybil after Alexander Keirincz and Cornelis van Poelenburch	goat	-	print on paper	2008
16	Lady Walking Her Dog after Claude-Louis Desrais	dog	pair of shoes	print on alu-dibond	2012
17	The Declaration of Love after Jean François de Troy	dog	2 pairs of shoes	print on paper	2004
18	Garden View with a Dog after Tomas Yepes	dog	-	print on paper	2014
19	Various Original Sketches, Design- and Construction-Drawings	-	-	drawings on paper	2003-2019
20	The Duchess of Alba (Black) after Francisco de Goya	-	pair of shoes	print on paper	2003



MARTA KLONOWSKA

01

*King-Charles-Spaniel*  
*after Johann Friedrich Wegener*

Ensemble of dog sculpture and print  
2019

**Spaniel sculpture | glass on metal framework**  
**H x L x W | 55 x 88 x 34 cm**

Inkjet print on paper  
Frame | H x W | 83 x 101 cm

lorch+seidel contemporary | Berlin



MARTA KLONOWSKA

01

*King-Charles-Spaniel*  
*after Johann Friedrich Wegener*

Ensemble of dog sculpture and print  
2019

Spaniel sculpture | glass on metal framework  
H x L x W | 55 x 88 x 34 cm

Inkjet print on paper  
Frame | H x W | 83 x 101 cm

lorch+seidel contemporary | Berlin



MARTA KLONOWSKA

02

*Jeune Femme en Robe à la Polonoise*  
after Pierre-Thomas LeClerc

Ensemble of dog sculpture and print  
2019

**Poodle sculpture | glass on metal framework**  
H x L x W | 75 x 73 x 35 cm

Inkjet print on paper

Image | H x W | 45,4 x 36,8 cm

Frame | H x W | 50 x 41 cm

lorch+seidel contemporary | Berlin





MARTA KLONOWSKA

02

*Jeune Femme en Robe à la Polonoise*  
after Pierre-Thomas LeClerc

Ensemble of dog sculpture and print  
2019

Poodle sculpture | glass on metal framework  
H x L x W | 75 x 73 x 35 cm

Inkjet print on paper

Image | H x W | 45,4 x 36,8 cm

Frame | H x W | 50 x 41 cm

lorch+seidel contemporary | Berlin



MARTA KLONOWSKA

03

*Carp*  
after Hiroshige Utagawa

Ensemble of fish sculpture and print  
2018

Fish sculpture | glass on metal framework | sculpture rotatable  
H x L x W | 50 x 90 x 50 cm

Inkjet print on paper  
Image | H x W | 34,9 x 29,2 cm

Private collection | Florida



MARTA KLONOWSKA

03

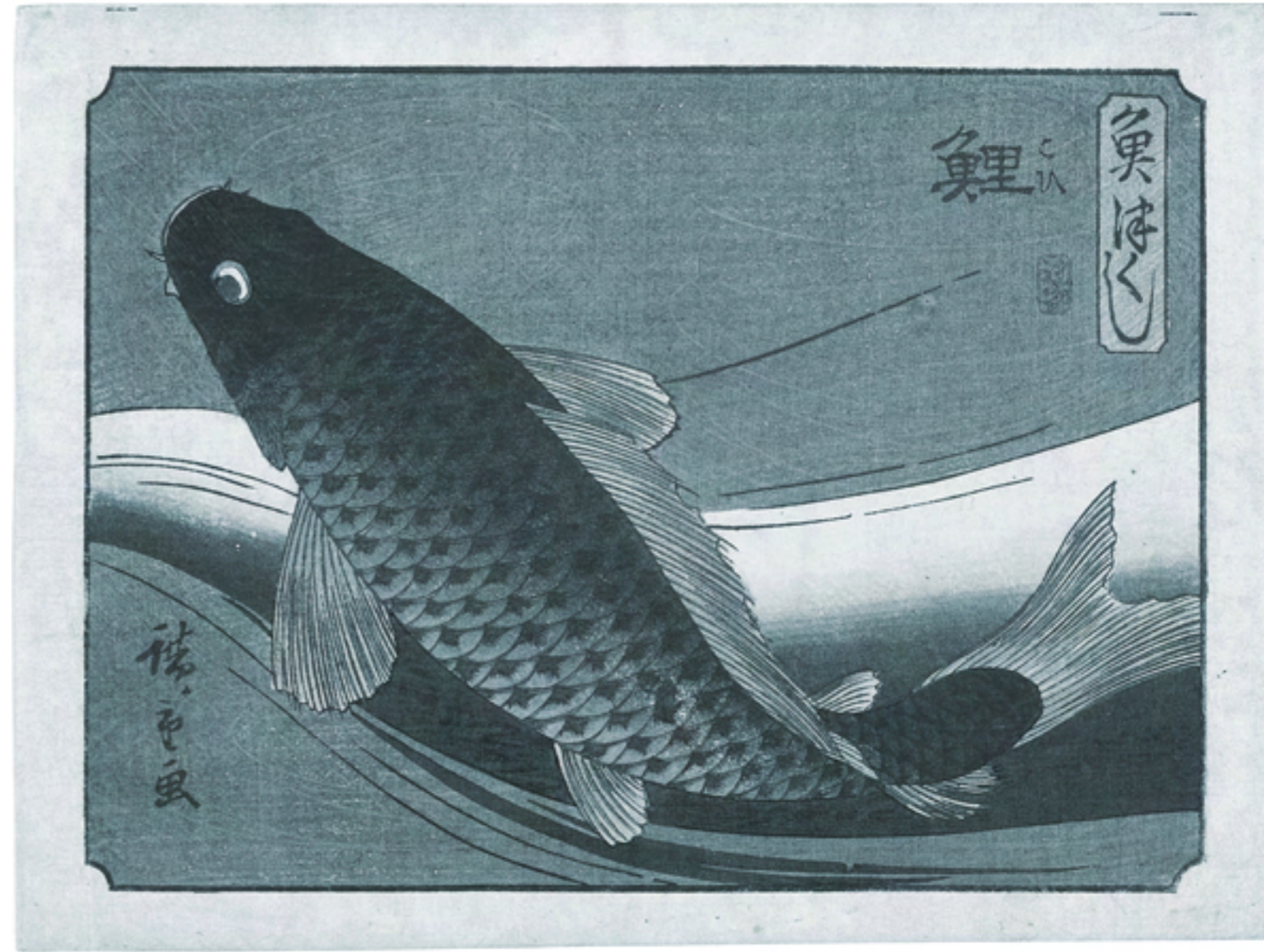
*Carp*  
after Hiroshige Utagawa

Ensemble of fish sculpture and print  
2018

Fish sculpture | glass on metal framework | sculpture rotatable  
H x L x W | 50 x 90 x 50 cm

Inkjet print on paper  
Image | H x W | 34,9 x 29,2 cm

Private collection | Florida



MARTA KLONOWSKA

04

*Demon*  
*after Giotto di Bondone*

Ensemble of demon sculpture and prints  
2018

Demon sculpture | glass on metal framework | wings removable  
H x L x W | 105 x 120 x 100 cm | sculpture rotatable

Inkjet prints on paper

Print-1 | full view | frame | H x W | 135 x 125 cm

Print-2 | detail view | frame | H x W | 46,5 x 54 cm

lorch+seidel contemporary | Berlin



MARTA KLONOWSKA

04

*Demon*  
after Giotto di Bondone

Ensemble of demon sculpture and prints  
2018

Demon sculpture | glass on metal framework | wings removable  
H x L x W | 105 x 120 x 100 cm | sculpture rotatable

Inkjet prints on paper

Print-1 | full view | frame | H x W | 135 x 125 cm

Print-2 | detail view | frame | H x W | 46,5 x 54 cm

lorch+seidel contemporary | Berlin



MARTA KLONOWSKA

04

*Demon*  
after Giotto di Bondone

Ensemble of demon sculpture and prints  
2018

Demon sculpture | glass on metal framework | wings removable  
H x L x W | 105 x 120 x 100 cm | sculpture rotatable

Inkjet prints on paper

Print-1 | full view | frame | H x W | 135 x 125 cm

Print-2 | detail view | frame | H x W | 46,5 x 54 cm

lorch+seidel contemporary | Berlin



MARTA KLONOWSKA

05

*Demoiselle en Polonoise*  
after Claude-Louis Desrais

Ensemble of dog sculpture, pair of ladies' shoes and print  
2014

Lion dog sculpture | glass on metal framework  
H x L x W | 45 x 55 x 30 cm

Pair of ladies' shoes | glass on wire mesh  
H x L x W | 15 x 25 x 10 cm

Inkjet print on paper  
Image | H x W | 37 x 26 cm  
Frame | H x W | 61,5 x 49,5 cm

lorch+seidel contemporary | Berlin



MARTA KLONOWSKA

05

*Demoiselle en Polonoise*  
after Claude-Louis Desrais

Ensemble of dog sculpture, pair of ladies' shoes and print  
2014

Lion dog sculpture | glass on metal framework  
H x L x W | 45 x 55 x 30 cm

Pair of ladies' shoes | glass on wire mesh  
H x L x W | 15 x 25 x 10 cm

Inkjet print on paper

Image | H x W | 37 x 26 cm

Frame | H x W | 61,5 x 49,5 cm

lorch+seidel contemporary | Berlin



*Desrais par Desrais* *Gravé par Riguard*

Demoiselle en Polonoise unie en Buras, garnie d'une bande de même étoffe, en 1778.



MARTA KLONOWSKA

06

*Baltasar Carlos as a Hunter*  
after Diego Velázquez

Ensemble of two dog sculptures, pair of children's boots and print  
2003

Lying dog sculpture | glass on metal frame work  
H x L x W | 35 x 90 x 60 cm

Sitting dog sculpture | glass on metal frame work  
H x L x W | 55 x 35 x 25 cm

Pair of children's boots | glass on wire mesh  
H x L x W | 35 x 25 x 10 cm

Inkjet print on canvas  
Stretcher | H x W | 188 x 101 cm

Private collection | Berlin



MARTA KLONOWSKA

06

*Baltasar Carlos as a Hunter*  
after Diego Velázquez

Ensemble of two dog sculptures, pair of children's boots and print  
2003

Lying dog sculpture | glass on metal frame work  
H x L x W | 35 x 90 x 60 cm

Sitting dog sculpture | glass on metal frame work  
H x L x W | 55 x 35 x 25 cm

Pair of children's boots | glass on wire mesh  
H x L x W | 35 x 25 x 10 cm

Inkjet print on canvas  
Stretcher | H x W | 188 x 101 cm

Private collection | Berlin



MARTA KLONOWSKA

06

*Baltasar Carlos as a Hunter*  
after Diego Velázquez

Ensemble of two dog sculptures, pair of children's boots and print  
2003

Lying dog sculpture | glass on metal frame work  
H x L x W | 35 x 90 x 60 cm

Sitting dog sculpture | glass on metal frame work  
H x L x W | 55 x 35 x 25 cm

Pair of children's boots | glass on wire mesh  
H x L x W | 35 x 25 x 10 cm

Inkjet print on canvas  
Stretcher | H x W | 188 x 101 cm

Private collection | Berlin



MARTA KLONOWSKA

06

*Baltasar Carlos as a Hunter*  
after Diego Velázquez

Ensemble of two dog sculptures, pair of children's boots and print  
2003

Lying dog sculpture | glass on metal frame work  
H x L x W | 35 x 90 x 60 cm

Sitting dog sculpture | glass on metal frame work  
H x L x W | 55 x 35 x 25 cm

Pair of children's boots | glass on wire mesh  
H x L x W | 35 x 25 x 10 cm

Inkjet print on canvas  
Stretcher | H x W | 188 x 101 cm

Private collection | Berlin



MARTA KLONOWSKA

07

*The Temptation of Saint Anthony*  
after Frans Francken the Younger

Ensemble of sculpture and print  
2008

Flute player sculpture | glass on metal frame work  
H x L x W | 94 x 58 x 44 cm

Inkjet print on paper  
Image | H x W | 52,2 x 80 cm  
Frame | H x W | 76 x 102 cm

Private collection | Berlin



MARTA KLONOWSKA

07

*The Temptation of Saint Anthony  
after Frans Francken the Younger*

Ensemble of sculpture and print  
2008

Flute player sculpture | glass on metal frame work  
H x L x W | 94 x 58 x 44 cm

Inkjet print on paper  
Image | H x W | 52,2 x 80 cm  
Frame | H x W | 76 x 102 cm

Private collection | Berlin



MARTA KLONOWSKA

07

*The Temptation of Saint Anthony*  
after Frans Francken the Younger

Ensemble of sculpture and print  
2008

Flute player sculpture | glass on metal frame work  
H x L x W | 94 x 58 x 44 cm

Inkjet print on paper  
Image | H x W | 52,2 x 80 cm  
Frame | H x W | 76 x 102 cm

Private collection | Berlin



MARTA KLONOWSKA

08

*Venus and Adonis*  
after Peter Paul Rubens

Ensemble of dog sculpture and print  
2008

Dog sculpture | glass on metal frame work  
H x L x W | 68 x 120 x 30 cm

Inkjet print on paper  
Image | H x W | 138 x 95 cm  
Frame | H x W | 153 x 110 cm

Private collection | Berlin





MARTA KLONOWSKA

08

*Venus and Adonis*  
after Peter Paul Rubens

Ensemble of dog sculpture and print  
2008

Dog sculpture | glass on metal frame work  
H x L x W | 68 x 120 x 30 cm

Inkjet print on paper  
Image | H x W | 138 x 95 cm  
Frame | H x W | 153 x 110 cm

Private collection | Berlin



MARTA KLONOWSKA

08

*Venus and Adonis*  
after Peter Paul Rubens

Ensemble of dog sculpture and print  
2008

Dog sculpture | glass on metal frame work  
H x L x W | 68 x 120 x 30 cm

Inkjet print on paper  
Image | H x W | 138 x 95 cm  
Frame | H x W | 153 x 110 cm

Private collection | Berlin



MARTA KLONOWSKA

09

*Baron*  
*after a living model*

Ensemble of dog sculpture and 4 drawings  
2012

Dog sculpture | glass on metal frame work  
H x L x W | 100 x 90 x 40 cm

4 drawings on paper  
4 frames | H x W | 31 x 22,5 cm

Gerisch-Foundation | Neumünster | Germany



MARTA KLONOWSKA

09

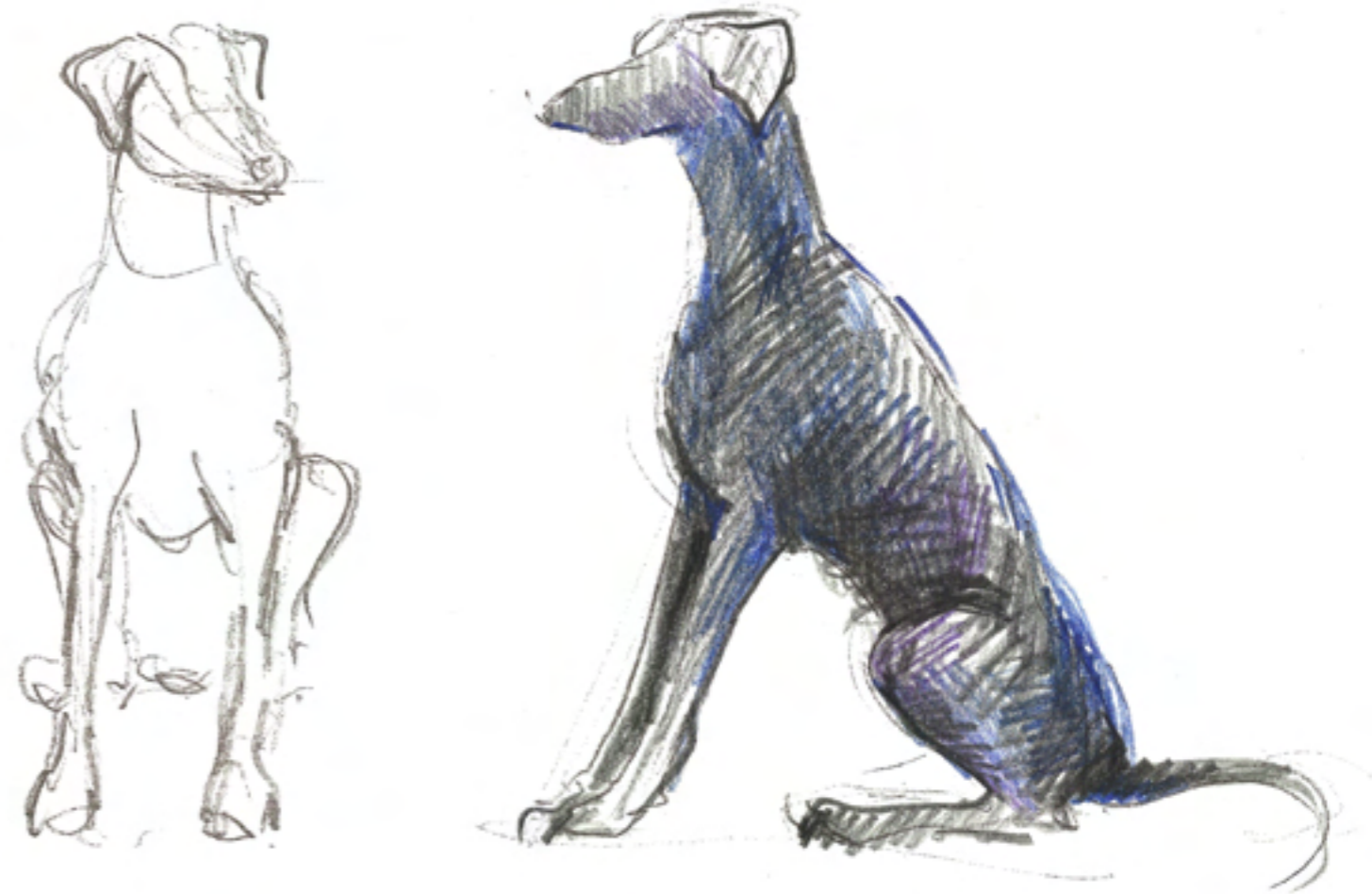
*Baron*  
*after a living model*

Ensemble of dog sculpture and 4 drawings  
2012

Dog sculpture | glass on metal frame work  
H x L x W | 100 x 90 x 40 cm

4 drawings on paper  
4 frames | H x W | 31 x 22,5 cm

Gerisch-Foundation | Neumünster | Germany



MARTA KLONOWSKA

10

*La Marquesa de Pontejos*  
after Francisco de Goya

Ensemble of dog sculpture, 1 pair of ladies' shoes and print  
2009

Dog sculpture | glass on metal frame work  
H x L x W | 45 x 45 x 20 cm

Pair of ladies' shoes | glass on wire mesh  
H x L x W | 15 x 25 x 10 cm

Inkjet print on paper  
Image | H x W | 27 x 17 cm  
Frame | H x W | 66 x 51 cm

Private collection | London



MARTA KLONOWSKA

10

*La Marquesa de Pontejos*  
after Francisco de Goya

Ensemble of dog sculpture, 1 pair of ladies' shoes and print  
2009

Dog sculpture | glass on metal frame work  
H x L x W | 45 x 45 x 20 cm

Pair of ladies' shoes | glass on wire mesh  
H x L x W | 15 x 25 x 10 cm

Inkjet print on paper  
Image | H x W | 27 x 17 cm  
Frame | H x W | 66 x 51 cm

Private collection | London



MARTA KLONOWSKA

10

*La Marquesa de Pontejos*  
after Francisco de Goya

Ensemble of dog sculpture, 1 pair of ladies' shoes and print  
2009

Dog sculpture | glass on metal frame work  
H x L x W | 45 x 45 x 20 cm

Pair of ladies' shoes | glass on wire mesh  
H x L x W | 15 x 25 x 10 cm

**Inkjet print on paper**

**Image | H x W | 27 x 17 cm**

**Frame | H x W | 66 x 51 cm**

Private collection | London



MARTA KLONOWSKA

11

*The Morning Walk*  
after Thomas Gainsborough

Ensemble of dog sculpture, three shoes and print  
2004

Dog sculpture | glass on metal framework  
H x L x W | 78 x 80 x 43 cm

Single ladies' shoe and pair of men's shoes | glass on wire mesh  
H x L x W | 15 x 25 x 10 cm

Inkjet print on canvas on stretcher  
H x W | 236 x 179 cm

European Museum of Modern Glass | Rödental/Coburg | Germany





MARTA KLONOWSKA

II

*The Morning Walk*  
after Thomas Gainsborough

Ensemble of dog sculpture, three shoes and print  
2004

Dog sculpture | glass on metal  
H x L x W | 78 x 80 x 43

Single ladies' shoe and pair of men's shoes | glass on wire mesh  
H x L x W | 15 x 25 x 10 cm

Inkjet print on canvas on stretcher  
H x W | 236 x 179 cm

European Museum of Modern Glass | Rödental/Coburg | Germany



MARTA KLONOWSKA

12

*Les Jeunes*  
after Francisco de Goya

Ensemble of dog sculpture, pair of children's shoes and print  
2003

Dog sculpture | glass on metal frame work  
H x L x W | 65 x 35 x 25 cm

Pair of children's shoes | glass on wire mesh  
H x L x W | 12 x 25 x 10 cm

Inkjet print on paper  
Image | H x W | 29 x 19,6 cm

Ernsting-Foundation | Lette/Coesfeld | Germany



MARTA KLONOWSKA

12

*Les Jeunes*  
after Francisco de Goya

Ensemble of dog sculpture, pair of children's shoes and print  
2003

Dog sculpture | glass on metal frame work  
H x L x W | 65 x 35 x 25 cm

Pair of children's shoes | glass on wire mesh  
H x L x W | 12 x 25 x 10 cm

Inkjet print on paper  
Image | H x W | 29 x 19,6 cm

Ernsting-Foundation | Lette/Coesfeld | Germany



MARTA KLONOWSKA

13

*Maria Teresa de Borbón y Vallabriga*  
*after Francisco de Goya*

Ensemble of dog sculpture, pair of children's shoes and print  
2003

Dog sculpture | glass on metal frame work  
H x L x W | 36 x 46 x 26 cm

Pair of children's shoes | glass on wire mesh  
H x L x W | 12 x 25 x 10 cm

Inkjet print on paper  
Image | H x W | 29 x 24,5 cm

Ernsting-Foundation | Lette/Coesfeld | Germany



MARTA KLONOWSKA

13

*Maria Teresa de Borbón y Vallabriga*  
after Francisco de Goya

Ensemble of dog sculpture, pair of children's shoes and print  
2003

Dog sculpture | glass on metal frame work  
H x L x W | 36 x 46 x 26 cm

Pair of children's shoes | glass on wire mesh  
H x L x W | 12 x 25 x 10 cm

Inkjet print on paper  
Image | H x W | 29 x 24,5 cm

Ernsting-Foundation | Lette/Coesfeld | Germany



MARTA KLONOWSKA

14

*The Duchess of Alba (White)*  
after Francisco de Goya

Ensemble of dog sculpture and print  
2003

Dog sculpture | glass on metal frame work  
H x L x W | 38 x 44 x 25 cm

Inkjet print on paper  
Frame | H x W | 49,5 x 39,5 cm

Private collection | Düsseldorf | Germany



MARTA KLONOWSKA

14

*The Duchess of Alba (White)*  
after Francisco de Goya

Ensemble of dog sculpture and print  
2003

Dog sculpture | glass on metal frame work  
H x L x W | 38 x 44 x 25 cm

Inkjet print on paper  
Frame | H x W | 49,5 x 39,5 cm

Private collection | Düsseldorf | Germany



MARTA KLONOWSKA

15

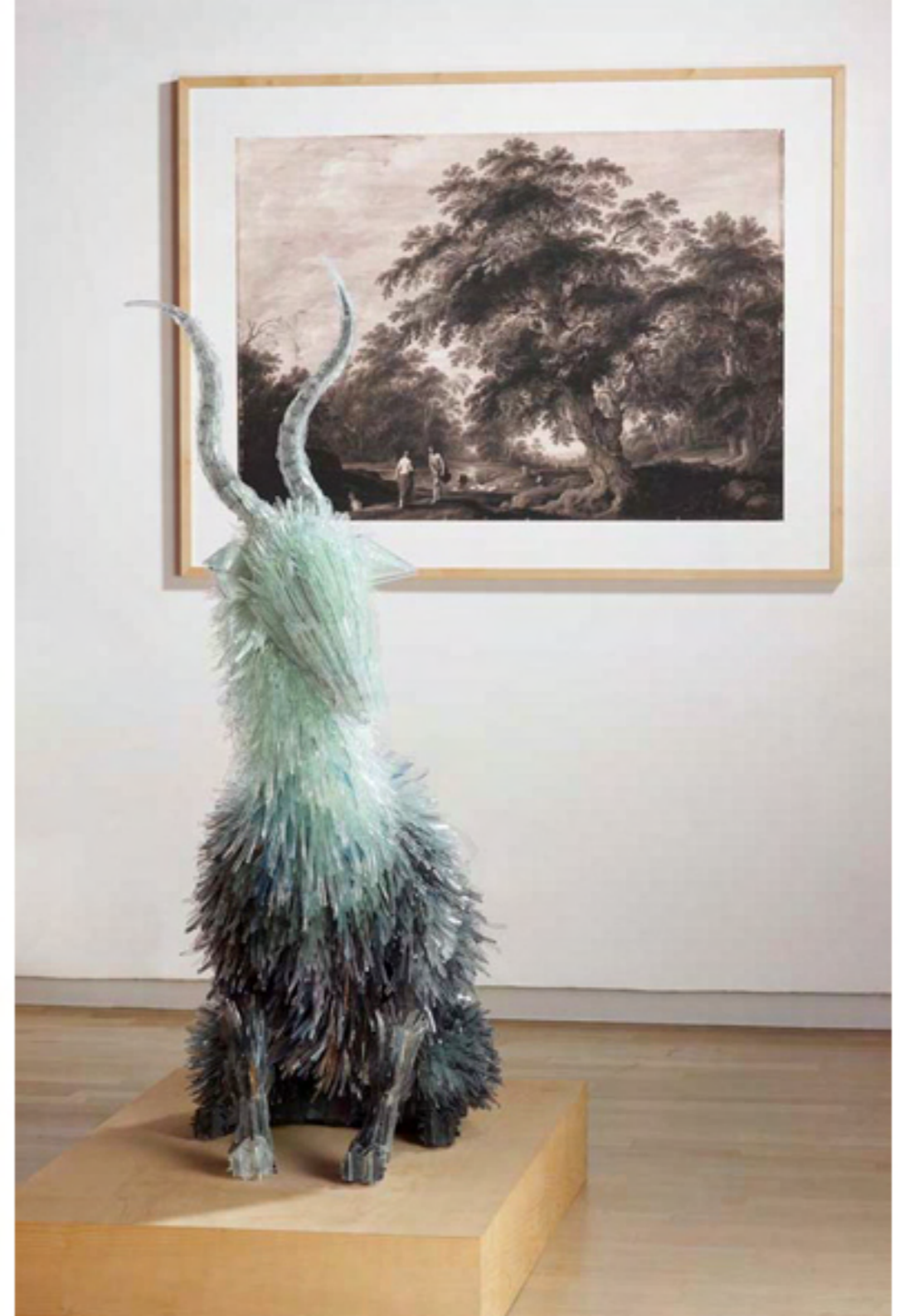
*Landscape with Apollo and Cumean Sybil*  
after Alexander Keirincz and Cornelis van Poelenburch

Ensemble of goat sculpture and print  
2008

Goat sculpture | glass on metal frame work  
H x L x W | 126 x 90 x 48 cm

Inkjet print on paper  
Frame | H x W | 98 x 130 cm

Museum Kunstpalast | Düsseldorf | Germany





MARTA KLONOWSKA

15

*Landscape with Apollo and Cumean Sybil*  
after Alexander Keirincz and Cornelis van Poelenburch

Ensemble of goat sculpture and print  
2008

Goat sculpture | glass on metal frame work  
H x L x W | 126 x 90 x 48 cm

Inkjet print on paper  
Frame | H x W | 98 x 130 cm

Museum Kunstpalast | Düsseldorf | Germany



MARTA KLONOWSKA

16

*Lady Walking Her Dog*  
after Claude-Louis Desrais

Ensemble of dog sculpture, pair of ladies' shoes and print  
2012

Dog sculpture | glass on metal frame work  
H x L x W | 65 x 75 x 35 cm

Pair of ladies' shoes | glass on wire mesh  
H x L x W | 17 x 27 x 10 cm

Inkjet print on alu-dibond, framed  
Frame | H x W | 144 x 110 cm

Private collection | Meilen/Zürich | Switzerland



MARTA KLONOWSKA

16

*Lady Walking Her Dog*  
after Claude-Louis Desrais

Ensemble of dog sculpture, pair of ladies' shoes and print  
2012

Dog sculpture | glass on metal frame work  
H x L x W | 65 x 75 x 35 cm

Pair of ladies' shoes | glass on wire mesh  
H x L x W | 17 x 27 x 10 cm

Inkjet print on alu-dibond, framed  
Frame | H x W | 144 x 110 cm

Private collection | Meilen/Zürich | Switzerland



MARTA KLONOWSKA

17

*The Declaration of Love*  
after Jean François de Troy

Ensemble of dog sculpture, two pairs of shoes and print  
2004

Dog sculpture | glass on metal framework  
H x L x W | 70 x 50 x 28 cm

Pair of ladies' shoes and 1 pair of men's shoes | glass on wire mesh  
H x L x W | 17 x 25 x 10 cm

Inkjet print on paper, framed under glass  
Image | H x W | 54,5 x 65 cm  
Frame | H x W | 88 x 78 cm

Private collection | Marghera/Venice | Italy



MARTA KLONOWSKA

17

*The Declaration of Love*  
after Jean François de Troy

Ensemble of dog sculpture, two pairs of shoes and print  
2004

**Dog sculpture | glass on metal framework**  
H x L x W | 70 x 50 x 28 cm

Pair of ladies' shoes and 1 pair of men's shoes | glass on wire mesh  
H x L x W | 17 x 25 x 10 cm

Inkjet print on paper, framed under glass  
Image | H x W | 54,5 x 65 cm  
Frame | H x W | 88 x 78 cm

Private collection | Marghera/Venice | Italy



MARTA KLONOWSKA

17

*The Declaration of Love*  
after Jean François de Troy

Ensemble of dog sculpture, 2 pairs of shoes and print  
2004

Dog sculpture | glass on metal framework  
H x L x W | 70 x 50 x 28 cm

Pair of ladies' shoes and 1 pair of men's shoes | glass on wire mesh  
H x L x W | 17 x 25 x 10 cm

Inkjet print on paper, framed under glass  
Image | H x W | 54,5 x 65 cm  
Frame | H x W | 88 x 78 cm

Private collection | Marghera/Venice | Italy



MARTA KLONOWSKA

18

*Garden View with a Dog*  
after Tomas Yepes

Ensemble of dog sculpture and print  
2014

Dog sculpture | glass on metal frame work  
H x L x W | 45 x 45 x 30 cm

Inkjet print on paper  
Image | H x W | 27 x 39,5 cm  
Frame | H x W | 51,5 x 64 cm

Toyama Glass Art Museum



MARTA KLONOWSKA

18

*Garden View with a Dog*  
after Tomas Yepes

Ensemble of dog sculpture and print  
2014

Dog sculpture | glass on metal frame work  
H x L x W | 45 x 45 x 30 cm

Inkjet print on paper  
Image | H x W | 27 x 39,5 cm  
Frame | H x W | 51,5 x 64 cm

Toyama Glass Art Museum





MARTA KLONOWSKA

18

*Garden View with a Dog*  
after Tomas Yepes

Ensemble of dog sculpture and print  
2014

Dog sculpture | glass on metal frame work  
H x L x W | 45 x 45 x 30 cm

Inkjet print on paper  
Image | H x W | 27 x 39,5 cm  
Frame | H x W | 51,5 x 64 cm

Toyama Glass Art Museum



MARTA KLONOWSKA

19

*Various Original Sketches, Design- and Construction-Drawings*  
by Marta Klonowska

Number of sheets

34 large + 46 small size sheets

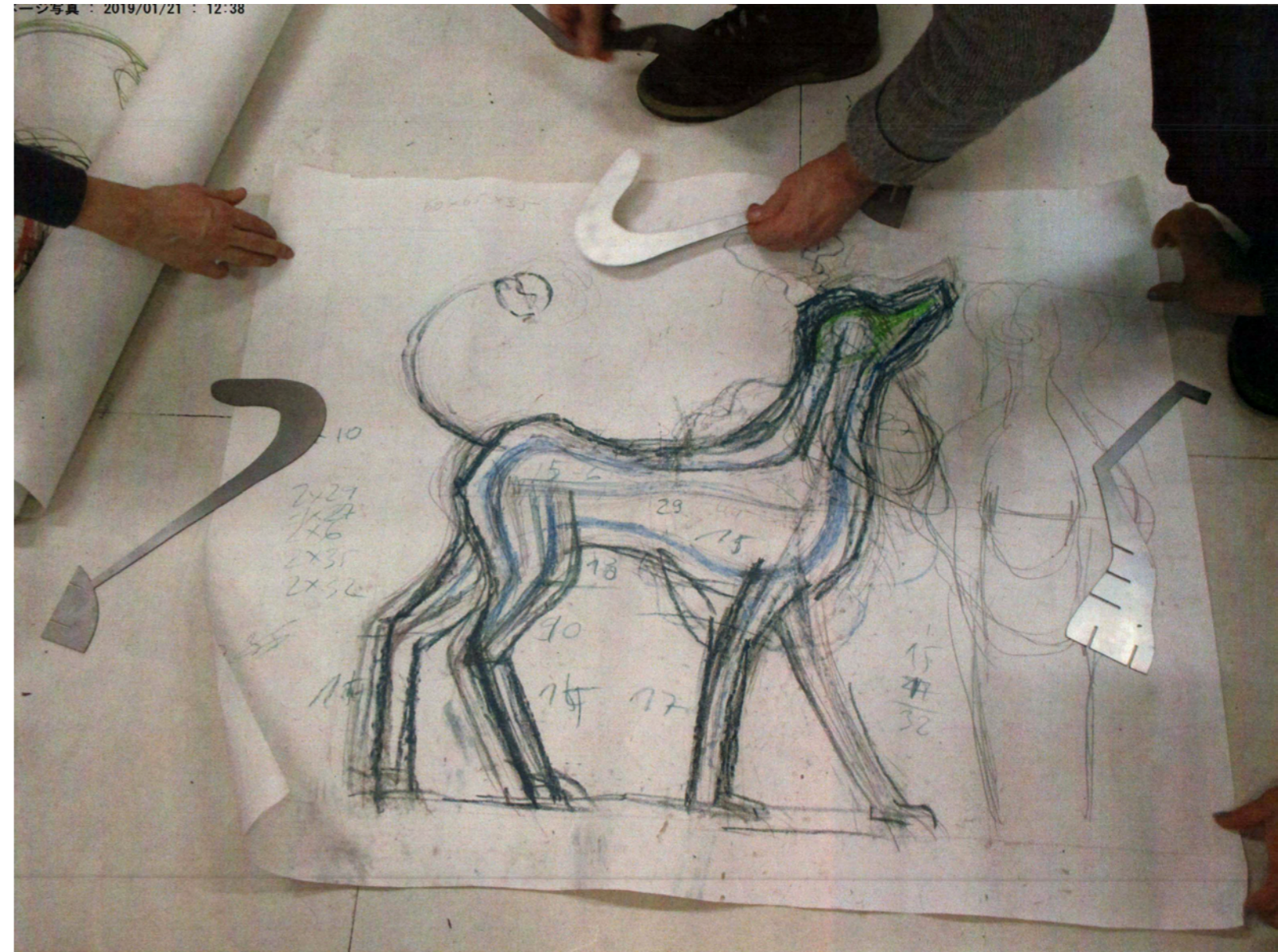
Size of sheets

Various sizes from 30 x 21 cm to 100 x 100 cm

Technique

Pencil, crayon, watercolour on paper

Collection of the artist



MARTA KLONOWSKA

20

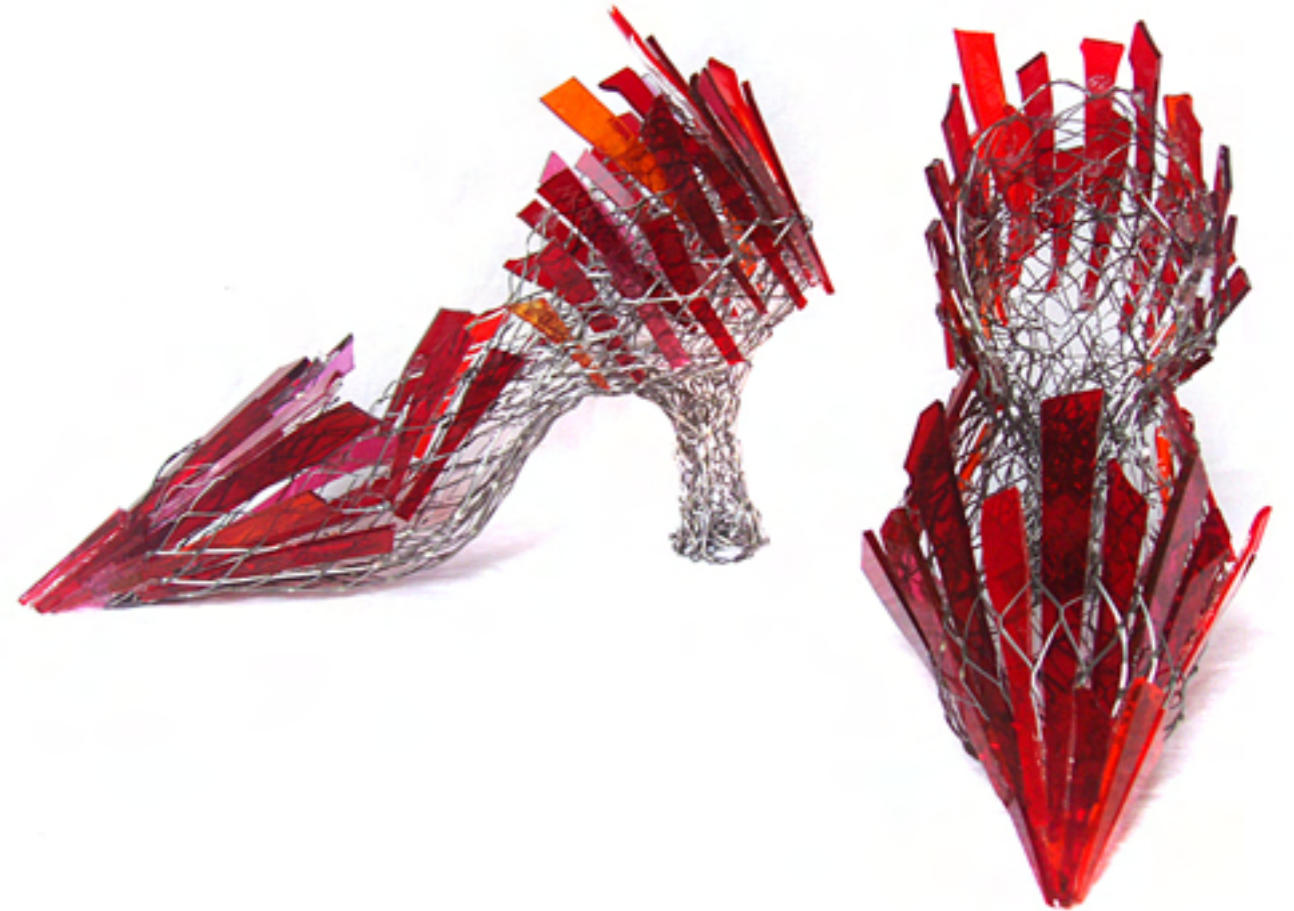
*The Duchess of Alba (Black)*  
after Francisco de Goya

Ensemble of 1 pair of ladies' shoes and print  
2003

Pair of ladies' shoes | glass on wire mesh  
H x L x W | 17 x 25 x 10 cm

Inkjet print on paper  
Frame | H x W | 49,5 x 40,5 cm

Private collection | Düsseldorf | Germany



MARTA KLONOWSKA

20

*The Duchess of Alba (Black)*  
after Francisco de Goya

Ensemble of 1 pair of ladies' shoes and print  
2003

Pair of ladies' shoes | glass on wire mesh  
H x L x W | 17 x 25 x 10 cm

Inkjet print on paper  
Frame | H x W | 49,5 x 40,5 cm

Private collection | Düsseldorf | Germany



## MARTA KLONOWSKA

Marta Klonowska, born In Warsaw in 1964, studied at the Academies of Fine Arts in Wroclaw (1987-89) and Düsseldorf (1989-97). In 1997, her professor A. R. Penck awarded her the post-graduate degree of *Meisterschülerin*. Marta Klonowska lives in Poland.

### Public Collections

- Barbara Achilles Foundation | Hamburg | DE
- Toyama Glass Art Museum | Toyama | JP
- Alexander Tutsek Foundation | Munich | DE
- The Corning Museum of Glass | Corning, NY | USA
- Kunstsammlungen der Veste Coburg | DE
- Glas-Museum Hentrich | museum kunst palast | Düsseldorf | DE
- Glas-Museum Alter Hof Herding | Ernsting Foundation | Coesfeld-Lette | DE
- Musée-Atelier du Verre | Sars-Poteries | FR

### Recognitions

- 2006 · The Bombay Sapphire Prize - Final Exhibition | London
- 2005 · Jutta-Cuny-Franz Prize | Honorary Diploma | Düsseldorf
- 2002 · Artist in residence | Akerby Skulpturpark | SE

### Publications

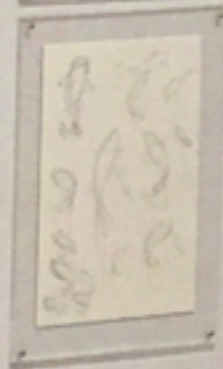
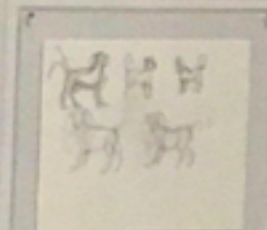
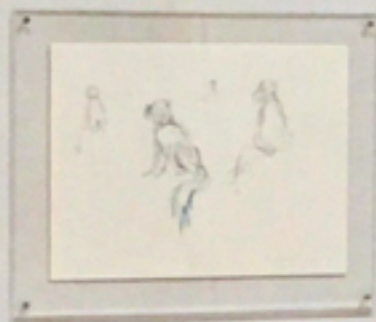
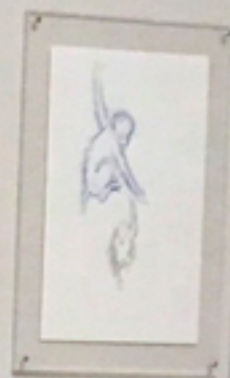
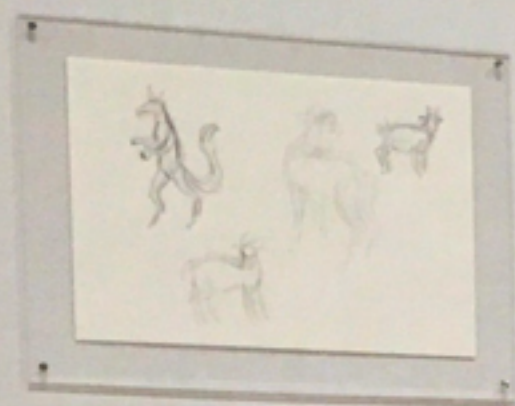
- 2014 · Lady Walking Her Dog | Daisuke Murata | The Window of Arts Magazine | Japan | Nov 2014
- 2013 · Nature Morte | Michael Petry | Thames & Hudson | London
- 2011 · Materials Revisited | Museum für Angewandte Kunst Frankfurt | jovis Verlag GmbH
- 2010 · Walking the dog | Kunsthalle Dominikanerkirche Osnabrück | Rasch Verlag
- 2009 · Cocker Spaniel and Other Tools for International Understanding | Kunsthalle zu Kiel | DuMont
- 2008 · Streichelzoo | Helmut Ricke | museum kunst palast | Düsseldorf
- 2006 · Marta Klonowska | David Revere McFadden | The Urban Glass Art Quarterly | Summer Edition

### Solo Exhibitions

- 2019 · Istota | Toyama Glass Art Museum | Toyama | JP
- 2015 · Lion Dog Meets Garden Dog | Iorch+seidel | Berlin
- 2013 · Puszek and Friends | Iorch+seidel | Berlin
- 2009 · Geschöpfe (with Sibylle von Preussen) | Iorch+seidel | Berlin
- Domestic Animals | The Finnish Glass Museum | Riihimäki | FN
- 2008 · Streichelzoo | museum kunst palast | Düsseldorf | DE
- 2005 · Portraits und Tierskizzen | Iorch+seidel | Berlin
- 2003 · dogwalk | Iorch+seidel | Berlin
- 2002 · Akerby Skulpturpark | SE
- 1997 · Galerie Cité Internationale des Arts de Paris

### Group Exhibitions

- 2016 · Glass Now! | Galerie Handwerk | Munich | DE
- Triennale Européene de la Céramique et du Verre | Anciens Abattoirs | Mons | BE
- Wie es uns gefällt | Herbert Gerisch-Foundation | Neumünster | DE
- 2015 · Inaugural exhibition | Toyama Glass Art Museum | JP
- 2012 · European Glass Context | Bornholm Art Museum | DK
- Glasstress NY - New Art from the Venice Biennales | Museum of Arts & Design New York
- In the Name of Love | Alexander Tutsek-Foundation | Munich
- 2011 · Materials Revisited | Museum für Angewandte Kunst | Frankfurt/Main | DE
- Glasstress | Palazzo Cavalli Franchetti | Venice | IT
- 2010 · Walking the dog | Kunsthalle Osnabrück | DE
- 2009 · Cocker Spaniel and other Tools ... | Kunsthalle Kiel | DE
- 2007 · Audacity in Art | Orlando Museum of Art | USA
- 2006 · The Bombay Sapphire Prize – Final Selection | The Bombay Sapphire Foundation | London
- 2004 · Glas im Großformat | Glasmuseum Alter Hof Herding | Coesfeld-Lette | DE



# ISTOTA

**Marta Klonowska**

Solo Exhibition

**Toyama Glass Art Museum**

April 27 - September 23, 2019

**Curated by**

Maho Asada and Haruka Nakashima



**lorch+seidel contemporary**

Konstanzer Str. 9 | T + 49 (0)30 978 939 35 | [info@lorch-seidel.de](mailto:info@lorch-seidel.de)  
D-10707 Berlin | M + 49 (0)176 235 265 65 | [www.lorch-seidel.de](http://www.lorch-seidel.de)

