



# ISTOTA

**Marta Klonowska**

Solo Exhibition

**Toyama Glass Art Museum**

April 27 - September 23, 2019

**Curated by**

Maho Asada and Haruka Nakashima



**lorch+seidel contemporary**

Konstanzer Str. 9 | T + 49 (0)30 978 939 35 | [info@lorch-seidel.de](mailto:info@lorch-seidel.de)

D-10707 Berlin | M + 49 (0)176 235 265 65 | [www.lorch-seidel.de](http://www.lorch-seidel.de)

## LIST OF EXHIBITS

N°	Title	Sculpture	Shoes	Print	Executed
01	King-Charles-Spaniel after Johann Friedrich Wegener	1 dog	-	1 print on paper	2019
02	Jeune Femme en Robe à la Polonoise after Pierre-Thomas LeClerc	1 dog	-	1 print on paper	2019
03	Carp after Hiroshige Utagawa	1 fish	-	1 print on paper	2018
04	Demon after Giotto di Bondone	1 demon	-	2 prints on paper	2018
05	Demoiselle en Polonoise after Claude-Louis Desrais	1 dog	1 pair of shoes	1 print on paper	2014
06	Baltasar Carlos as a Hunter after Diego Velázquez	2 dogs	1 pair of boots	1 print on canvas	2003
07	The Temptation of Saint Anthony after Frans Francken the Younger	1 flute player	-	1 print on paper	2008
08	Venus and Adonis after Peter Paul Rubens	1 dog	-	1 print on canvas	2008
09	Baron	1 dog	-	4 drawings on paper	2012
10	La Marquesa de Pontejos after Francisco de Goya	1 dog	1 pair of shoes	1 print on paper	2009
11	The Morning Walk after Thomas Gainsborough	1 dog	1 pair of shoes + single shoe	1 print on canvas	2004
12	Les Jeunes after Francisco de Goya	1 dog	1 pair of shoes	1 print on paper	2003
13	Maria Teresa de Borbón y Vallabriga after Francisco de Goya	1 dog	1 pair of shoes	1 print on paper	2003
14	The Duchess of Alba (White) after Francisco de Goya	1 dog	-	1 print on paper	2003
15	Landscape with Apollo and Cumean Sybil after Alexander Keirincz and Cornelis van Poelenburch	1 goat	-	1 print on paper	2008
16	Lady Walking Her Dog after Claude-Louis Desrais	1 dog	1 pair of shoes	1 print on alu-dibond	2012
17	The Declaration of Love after Jean François de Troy	1 dog	2 pairs of shoes	1 print on paper	2004
18	Garden View with a Dog after Tomas Yepes	1 dog	-	1 print on paper	2014
19	Various Original Sketches, Design- and Construction-Drawings	-	-	80 drawings on paper	2003-2019
20	The Duchess of Alba (Black) after Francisco de Goya	-	1 pair of shoes	1 print on paper	2003

MARTA KLONOWSKA

01

*King-Charles-Spaniel*  
*after Johann Friedrich Wegener*

Ensemble of dog sculpture and print  
2019

**Spaniel sculpture | glass on metal framework**  
**H x L x W | 55 x 88 x 34 cm**

Inkjet print on paper  
Frame | H x W | 83 x 101 cm

lorch+seidel contemporary | Berlin



MARTA KLONOWSKA

01

*King-Charles-Spaniel*  
*after Johann Friedrich Wegener*

Ensemble of dog sculpture and print  
2019

Spaniel sculpture | glass on metal framework  
H x L x W | 55 x 88 x 34 cm

Inkjet print on paper  
Frame | H x W | 83 x 101 cm

lorch+seidel contemporary | Berlin



MARTA KLONOWSKA

02

*Jeune Femme en Robe à la Polonoise*  
after Pierre-Thomas LeClerc

Ensemble of dog sculpture and print  
2019

**Poodle sculpture** | glass on metal framework  
H x L x W | 75 x 73 x 35 cm

Inkjet print on paper

Image | H x W | 45,4 x 36,8 cm

Frame | H x W | 50 x 41 cm

lorch+seidel contemporary | Berlin



MARTA KLONOWSKA

02

*Jeune Femme en Robe à la Polonoise*  
after Pierre-Thomas LeClerc

Ensemble of dog sculpture and print  
2019

Poodle sculpture | glass on metal framework  
H x L x W | 75 x 73 x 35 cm

Inkjet print on paper

Image | H x W | 45,4 x 36,8 cm

Frame | H x W | 50 x 41 cm

lorch+seidel contemporary | Berlin



MARTA KLONOWSKA

03

*Carp*  
after Hiroshige Utagawa

Ensemble of fish sculpture and print  
2018

Fish sculpture | glass on metal framework | sculpture rotatable  
H x L x W | 50 x 90 x 50 cm

Inkjet print on paper  
Image | H x W | 34,9 x 29,2 cm

Private collection | Florida





MARTA KLONOWSKA

03

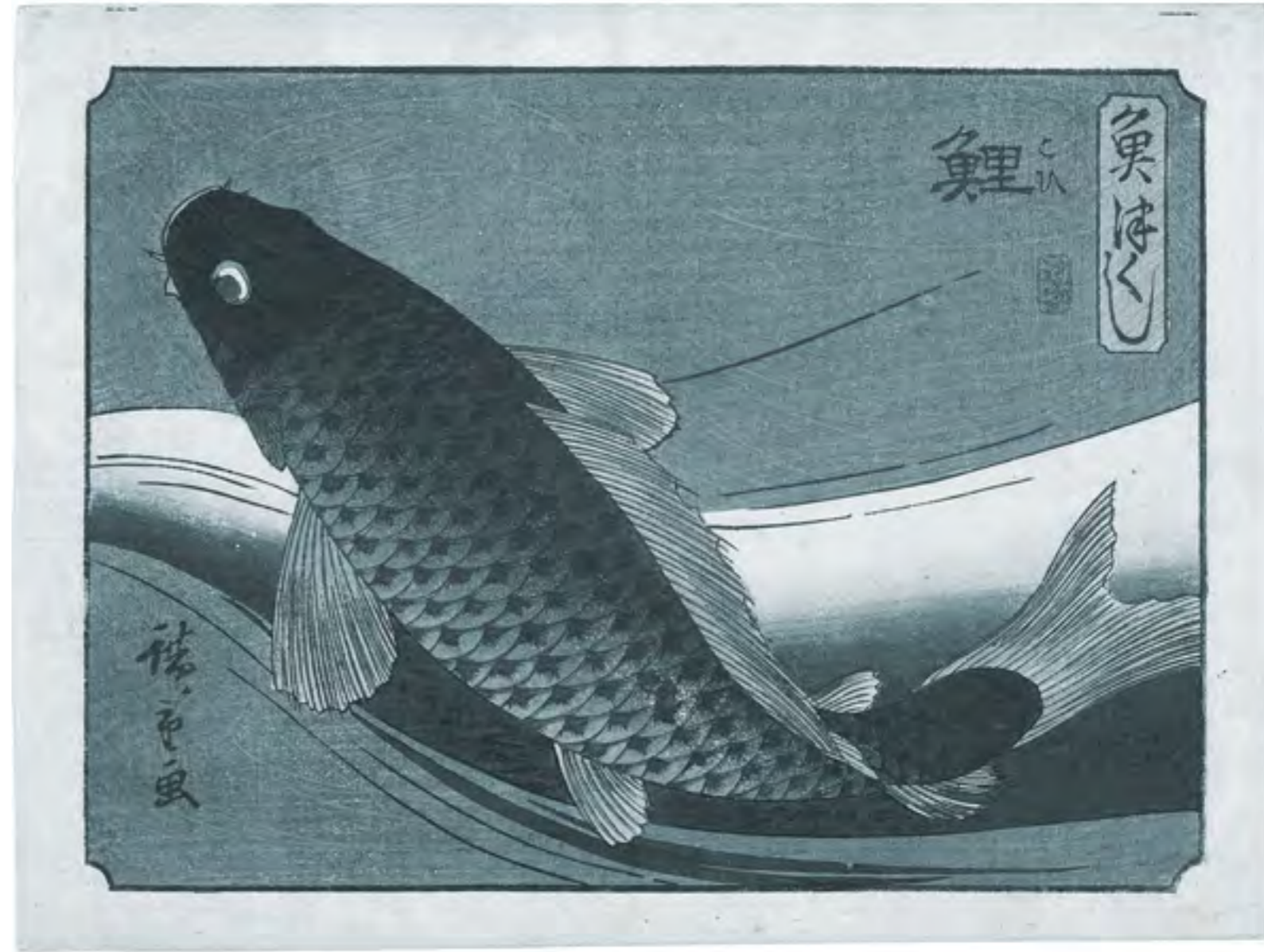
*Carp*  
after Hiroshige Utagawa

Ensemble of fish sculpture and print  
2018

Fish sculpture | glass on metal framework | sculpture rotatable  
H x L x W | 50 x 90 x 50 cm

Inkjet print on paper  
Image | H x W | 34,9 x 29,2 cm

Private collection | Florida



MARTA KLONOWSKA

04

*Demon*  
*after Giotto di Bondone*

Ensemble of demon sculpture and prints  
2018

Demon sculpture | glass on metal framework | wings removable  
H x L x W | 105 x 120 x 100 cm | sculpture rotatable

Inkjet prints on paper

Print-1 | full view | frame | H x W | 135 x 125 cm

Print-2 | detail view | frame | H x W | 46,5 x 54 cm

lorch+seidel contemporary | Berlin



MARTA KLONOWSKA

04

*Demon*  
after Giotto di Bondone

Ensemble of demon sculpture and prints  
2018

Demon sculpture | glass on metal framework | wings removable  
H x L x W | 105 x 120 x 100 cm | sculpture rotatable

Inkjet prints on paper

Print-1 | full view | frame | H x W | 135 x 125 cm

Print-2 | detail view | frame | H x W | 46,5 x 54 cm

lorch+seidel contemporary | Berlin



MARTA KLONOWSKA

04

*Demon*  
after Giotto di Bondone

Ensemble of demon sculpture and prints  
2018

Demon sculpture | glass on metal framework | wings removable  
H x L x W | 105 x 120 x 100 cm | sculpture rotatable

Inkjet prints on paper

Print-1 | full view | frame | H x W | 135 x 125 cm

Print-2 | detail view | frame | H x W | 46,5 x 54 cm

lorch+seidel contemporary | Berlin



MARTA KLONOWSKA

05

*Demoiselle en Polonoise*  
after Claude-Louis Desrais

Ensemble of dog sculpture, pair of ladies' shoes and print  
2014

Lion dog sculpture | glass on metal framework  
H x L x W | 45 x 55 x 30 cm

Pair of ladies' shoes | glass on wire mesh  
H x L x W | 15 x 25 x 10 cm

Inkjet print on paper  
Image | H x W | 37 x 26 cm  
Frame | H x W | 61,5 x 49,5 cm

lorch+seidel contemporary | Berlin



MARTA KLONOWSKA

05

*Demoiselle en Polonoise*  
after Claude-Louis Desrais

Ensemble of dog sculpture, pair of ladies' shoes and print  
2014

Lion dog sculpture | glass on metal framework  
H x L x W | 45 x 55 x 30 cm

Pair of ladies' shoes | glass on wire mesh  
H x L x W | 15 x 25 x 10 cm

Inkjet print on paper  
Image | H x W | 37 x 26 cm  
Frame | H x W | 61,5 x 49,5 cm

lorch+seidel contemporary | Berlin



*Desrais par Desrais*  
Demoiselle en Polonoise unie en Buras, garnie d'une bande de même étoffe, en 1778. *Gravé par Legendre*

MARTA KLONOWSKA

06

*Baltasar Carlos as a Hunter*  
after Diego Velázquez

Ensemble of two dog sculptures, pair of children's boots and print  
2003

Lying dog sculpture | glass on metal frame work  
H x L x W | 35 x 90 x 60 cm

Sitting dog sculpture | glass on metal frame work  
H x L x W | 55 x 35 x 25 cm

Pair of children's boots | glass on wire mesh  
H x L x W | 35 x 25 x 10 cm

Inkjet print on canvas  
Stretcher | H x W | 188 x 101 cm

Private collection | Berlin



MARTA KLONOWSKA

06

*Baltasar Carlos as a Hunter*  
after Diego Velázquez

Ensemble of two dog sculptures, pair of children's boots and print  
2003

Lying dog sculpture | glass on metal frame work  
H x L x W | 35 x 90 x 60 cm

Sitting dog sculpture | glass on metal frame work  
H x L x W | 55 x 35 x 25 cm

Pair of children's boots | glass on wire mesh  
H x L x W | 35 x 25 x 10 cm

Inkjet print on canvas  
Stretcher | H x W | 188 x 101 cm

Private collection | Berlin





MARTA KLONOWSKA

06

*Baltasar Carlos as a Hunter*  
after Diego Velázquez

Ensemble of two dog sculptures, pair of children's boots and print  
2003

Lying dog sculpture | glass on metal frame work  
H x L x W | 35 x 90 x 60 cm

Sitting dog sculpture | glass on metal frame work  
H x L x W | 55 x 35 x 25 cm

Pair of children's boots | glass on wire mesh  
H x L x W | 35 x 25 x 10 cm

Inkjet print on canvas  
Stretcher | H x W | 188 x 101 cm

Private collection | Berlin



MARTA KLONOWSKA

06

*Baltasar Carlos as a Hunter*  
after Diego Velázquez

Ensemble of two dog sculptures, pair of children's boots and print  
2003

Lying dog sculpture | glass on metal frame work  
H x L x W | 35 x 90 x 60 cm

Sitting dog sculpture | glass on metal frame work  
H x L x W | 55 x 35 x 25 cm

Pair of children's boots | glass on wire mesh  
H x L x W | 35 x 25 x 10 cm

Inkjet print on canvas  
Stretcher | H x W | 188 x 101 cm

Private collection | Berlin



MARTA KLONOWSKA

07

*The Temptation of Saint Anthony*  
after Frans Francken the Younger

Ensemble of sculpture and print  
2008

Flute player sculpture | glass on metal frame work  
H x L x W | 94 x 58 x 44 cm

Inkjet print on paper  
Image | H x W | 52,2 x 80 cm  
Frame | H x W | 76 x 102 cm

Private collection | Berlin



MARTA KLONOWSKA

07

*The Temptation of Saint Anthony*  
after Frans Francken the Younger

Ensemble of sculpture and print  
2008

Flute player sculpture | glass on metal frame work  
H x L x W | 94 x 58 x 44 cm

Inkjet print on paper  
Image | H x W | 52,2 x 80 cm  
Frame | H x W | 76 x 102 cm

Private collection | Berlin



MARTA KLONOWSKA

07

*The Temptation of Saint Anthony*  
after Frans Francken the Younger

Ensemble of sculpture and print  
2008

Flute player sculpture | glass on metal frame work  
H x L x W | 94 x 58 x 44 cm

Inkjet print on paper  
Image | H x W | 52,2 x 80 cm  
Frame | H x W | 76 x 102 cm

Private collection | Berlin



MARTA KLONOWSKA

08

*Venus and Adonis*  
after Peter Paul Rubens

Ensemble of dog sculpture and print  
2008

Dog sculpture | glass on metal frame work  
H x L x W | 68 x 120 x 30 cm

Inkjet print on paper  
Image | H x W | 138 x 95 cm  
Frame | H x W | 153 x 110 cm

Private collection | Berlin



MARTA KLONOWSKA

08

*Venus and Adonis*  
after Peter Paul Rubens

Ensemble of dog sculpture and print  
2008

Dog sculpture | glass on metal frame work  
H x L x W | 68 x 120 x 30 cm

Inkjet print on paper  
Image | H x W | 138 x 95 cm  
Frame | H x W | 153 x 110 cm

Private collection | Berlin



MARTA KLONOWSKA

08

*Venus and Adonis*  
after Peter Paul Rubens

Ensemble of dog sculpture and print  
2008

Dog sculpture | glass on metal frame work  
H x L x W | 68 x 120 x 30 cm

Inkjet print on paper  
Image | H x W | 138 x 95 cm  
Frame | H x W | 153 x 110 cm

Private collection | Berlin





MARTA KLONOWSKA

09

*Baron*  
*after a living model*

Ensemble of dog sculpture and 4 drawings  
2012

Dog sculpture | glass on metal frame work  
H x L x W | 100 x 90 x 40 cm

4 drawings on paper  
4 frames | H x W | 31 x 22,5 cm

Gerisch-Foundation | Neumünster | Germany



MARTA KLONOWSKA

09

*Baron*  
*after a living model*

Ensemble of dog sculpture and 4 drawings  
2012

Dog sculpture | glass on metal frame work  
H x L x W | 100 x 90 x 40 cm

4 drawings on paper  
4 frames | H x W | 31 x 22,5 cm

Gerisch-Foundation | Neumünster | Germany



MARTA KLONOWSKA

10

*La Marquesa de Pontejos*  
after Francisco de Goya

Ensemble of dog sculpture, 1 pair of ladies' shoes and print  
2009

Dog sculpture | glass on metal frame work  
H x L x W | 45 x 45 x 20 cm

Pair of ladies' shoes | glass on wire mesh  
H x L x W | 15 x 25 x 10 cm

Inkjet print on paper  
Image | H x W | 27 x 17 cm  
Frame | H x W | 66 x 51 cm

Private collection | London



MARTA KLONOWSKA

10

*La Marquesa de Pontejos*  
after Francisco de Goya

Ensemble of dog sculpture, 1 pair of ladies' shoes and print  
2009

**Dog sculpture** | glass on metal frame work  
H x L x W | 45 x 45 x 20 cm

Pair of ladies' shoes | glass on wire mesh  
H x L x W | 15 x 25 x 10 cm

Inkjet print on paper  
Image | H x W | 27 x 17 cm  
Frame | H x W | 66 x 51 cm

Private collection | London



MARTA KLONOWSKA

10

*La Marquesa de Pontejos*  
after Francisco de Goya

Ensemble of dog sculpture, 1 pair of ladies' shoes and print  
2009

Dog sculpture | glass on metal frame work  
H x L x W | 45 x 45 x 20 cm

Pair of ladies' shoes | glass on wire mesh  
H x L x W | 15 x 25 x 10 cm

Inkjet print on paper

Image | H x W | 27 x 17 cm

Frame | H x W | 66 x 51 cm

Private collection | London



MARTA KLONOWSKA

11

*The Morning Walk*  
after Thomas Gainsborough

Ensemble of dog sculpture, three shoes and print  
2004

Dog sculpture | glass on metal framework  
H x L x W | 78 x 80 x 43 cm

Single ladies' shoe and pair of men's shoes | glass on wire mesh  
H x L x W | 15 x 25 x 10 cm

Inkjet print on canvas  
H x W | 236 x 179 cm

European Museum of Modern Glass | Rödental/Coburg | Germany



MARTA KLONOWSKA

11

*The Morning Walk*  
after Thomas Gainsborough

Ensemble of dog sculpture, three shoes and print  
2004

Dog sculpture | glass on metal  
H x L x W | 78 x 80 x 43

Single ladies' shoe and pair of men's shoes | glass on wire mesh  
H x L x W | 15 x 25 x 10 cm

Inkjet print on canvas  
H x W | 236 x 179 cm

European Museum of Modern Glass | Rödental/Coburg | Germany



MARTA KLONOWSKA

12

*Les Jeunes*  
after Francisco de Goya

Ensemble of dog sculpture, pair of children's shoes and print  
2003

Dog sculpture | glass on metal frame work  
H x L x W | 65 x 35 x 25 cm

Pair of children's shoes | glass on wire mesh  
H x L x W | 12 x 25 x 10 cm

Inkjet print on paper  
Image | H x W | 29 x 19,6 cm

Ernsting-Foundation | Lette/Coesfeld | Germany





MARTA KLONOWSKA

12

*Les Jeunes*  
after Francisco de Goya

Ensemble of dog sculpture, pair of children's shoes and print  
2003

Dog sculpture | glass on metal frame work  
H x L x W | 65 x 35 x 25 cm

Pair of children's shoes | glass on wire mesh  
H x L x W | 12 x 25 x 10 cm

Inkjet print on paper  
Image | H x W | 29 x 19,6 cm

Ernsting-Foundation | Lette/Coesfeld | Germany



MARTA KLONOWSKA

13

*Maria Teresa de Borbón y Vallabriga*  
*after Francisco de Goya*

Ensemble of dog sculpture, pair of children's shoes and print  
2003

Dog sculpture | glass on metal frame work  
H x L x W | 36 x 46 x 26 cm

Pair of children's shoes | glass on wire mesh  
H x L x W | 12 x 25 x 10 cm

Inkjet print on paper  
Image | H x W | 29 x 24,5 cm

Ernsting-Foundation | Lette/Coesfeld | Germany



MARTA KLONOWSKA

13

*Maria Teresa de Borbón y Vallabriga*  
after Francisco de Goya

Ensemble of dog sculpture, pair of children's shoes and print  
2003

Dog sculpture | glass on metal frame work  
H x L x W | 36 x 46 x 26 cm

Pair of children's shoes | glass on wire mesh  
H x L x W | 12 x 25 x 10 cm

Inkjet print on paper  
Image | H x W | 29 x 24,5 cm

Ernsting-Foundation | Lette/Coesfeld | Germany



MARTA KLONOWSKA

14

*The Duchess of Alba (White)*  
after Francisco de Goya

Ensemble of dog sculpture and print  
2003

Dog sculpture | glass on metal frame work  
H x L x W | 38 x 44 x 25 cm

Inkjet print on paper  
Frame | H x W | 49,5 x 39,5 cm

Private collection | Düsseldorf | Germany



MARTA KLONOWSKA

14

*The Duchess of Alba (White)*  
after Francisco de Goya

Ensemble of dog sculpture and print  
2003

Dog sculpture | glass on metal frame work  
H x L x W | 38 x 44 x 25 cm

Inkjet print on paper  
Frame | H x W | 49,5 x 39,5 cm

Private collection | Düsseldorf | Germany



MARTA KLONOWSKA

15

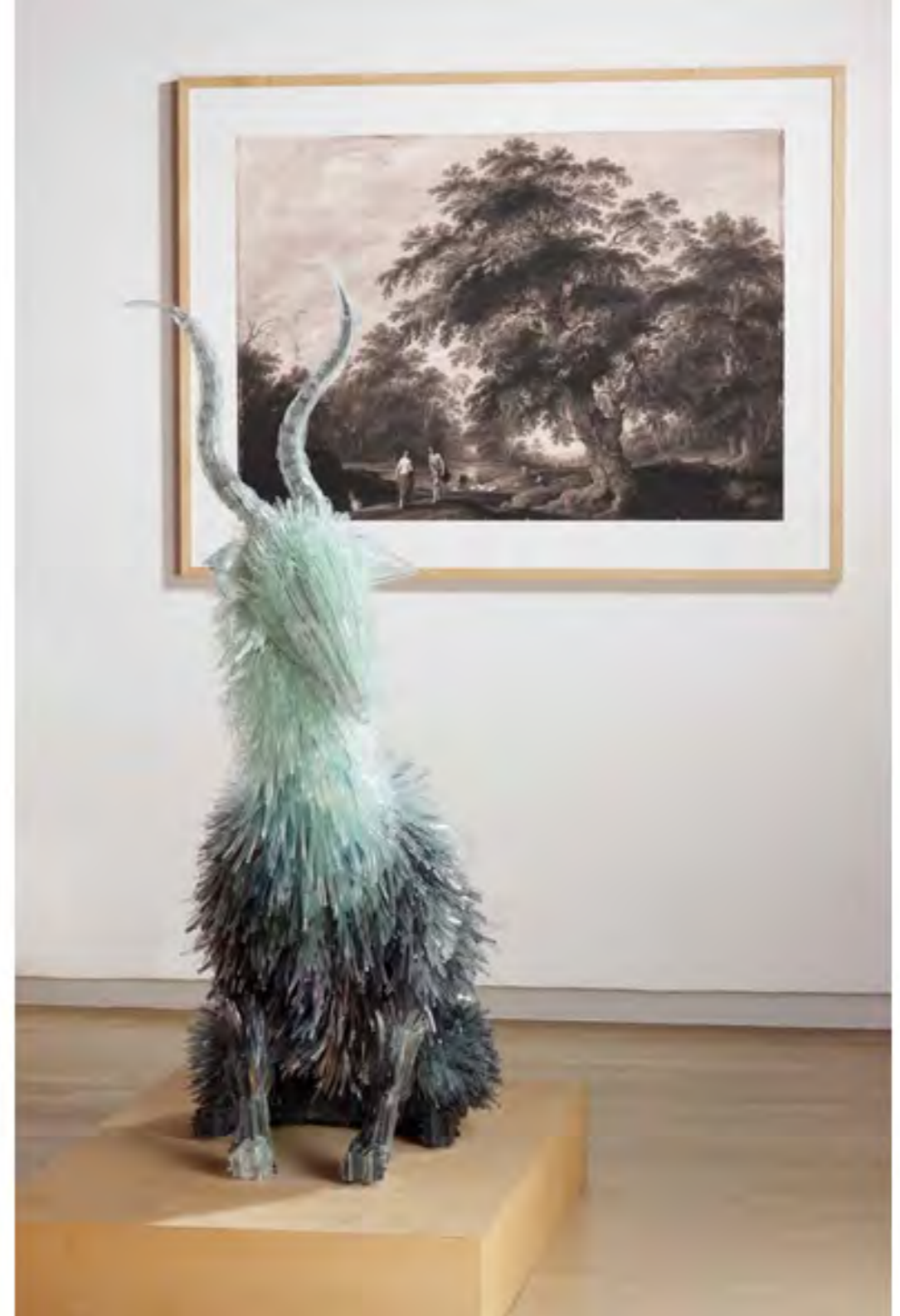
*Landscape with Apollo and Cumean Sybil*  
after Alexander Keirincz and Cornelis van Poelenburch

Ensemble of goat sculpture and print  
2008

Goat sculpture | glass on metal frame work  
H x L x W | 126 x 90 x 48 cm

Inkjet print on paper  
Frame | H x W | 98 x 130 cm

Museum Kunstpalast | Düsseldorf | Germany



MARTA KLONOWSKA

15

*Landscape with Apollo and Cumean Sybil*  
after Alexander Keirincz and Cornelis van Poelenburch

Ensemble of goat sculpture and print  
2008

Goat sculpture | glass on metal frame work  
H x L x W | 126 x 90 x 48 cm

Inkjet print on paper  
Frame | H x W | 98 x 130 cm

Museum Kunstpalast | Düsseldorf | Germany



MARTA KLONOWSKA

16

*Lady Walking Her Dog*  
after Claude-Louis Desrais

Ensemble of dog sculpture, pair of ladies' shoes and print  
2012

Dog sculpture | glass on metal frame work  
H x L x W | 65 x 75 x 35 cm

Pair of ladies' shoes | glass on wire mesh  
H x L x W | 17 x 27 x 10 cm

Inkjet print on alu-dibond  
Frame | H x W | 144 x 110 cm

Private collection | Meilen/Zürich | Switzerland





MARTA KLONOWSKA

16

*Lady Walking Her Dog*  
after Claude-Louis Desrais

Ensemble of dog sculpture, pair of ladies' shoes and print  
2012

Dog sculpture | glass on metal frame work  
H x L x W | 65 x 75 x 35 cm

Pair of ladies' shoes | glass on wire mesh  
H x L x W | 17 x 27 x 10 cm

Inkjet print on alu-dibond  
Frame | H x W | 144 x 110 cm

Private collection | Meilen/Zürich | Switzerland



MARTA KLONOWSKA

17

*The Declaration of Love*  
after Jean François de Troy

Ensemble of dog sculpture, two pairs of shoes and print  
2004

Dog sculpture | glass on metal framework  
H x L x W | 70 x 50 x 28 cm

Pair of ladies' shoes and 1 pair of men's shoes | glass on wire mesh  
H x L x W | 17 x 25 x 10 cm

Inkjet print on paper  
Image | H x W | 54,5 x 65 cm  
Frame | H x W | 88 x 78 cm

Private collection | Marghera/Venice | Italy



MARTA KLONOWSKA

17

*The Declaration of Love*  
after Jean François de Troy

Ensemble of dog sculpture, two pairs of shoes and print  
2004

**Dog sculpture | glass on metal framework**  
H x L x W | 70 x 50 x 28 cm

Pair of ladies' shoes and 1 pair of men's shoes | glass on wire mesh  
H x L x W | 17 x 25 x 10 cm

Inkjet print on paper  
Image | H x W | 54,5 x 65 cm  
Frame | H x W | 88 x 78 cm

Private collection | Marghera/Venice | Italy



MARTA KLONOWSKA

17

*The Declaration of Love*  
after Jean François de Troy

Ensemble of dog sculpture, 2 pairs of shoes and print  
2004

Dog sculpture | glass on metal framework  
H x L x W | 70 x 50 x 28 cm

Pair of ladies' shoes and 1 pair of men's shoes | glass on wire mesh  
H x L x W | 17 x 25 x 10 cm

Inkjet print on paper  
Image | H x W | 54,5 x 65 cm  
Frame | H x W | 88 x 78 cm

Private collection | Marghera/Venice | Italy



MARTA KLONOWSKA

18

*Garden View with a Dog*  
after Tomas Yepes

Ensemble of dog sculpture and print  
2014

Dog sculpture | glass on metal frame work  
H x L x W | 45 x 45 x 30 cm

Inkjet print on paper  
Image | H x W | 27 x 39,5 cm  
Frame | H x W | 51,5 x 64 cm

Toyama Glass Art Museum



MARTA KLONOWSKA

18

*Garden View with a Dog*  
after Tomas Yepes

Ensemble of dog sculpture and print  
2014

Dog sculpture | glass on metal frame work  
H x L x W | 45 x 45 x 30 cm

Inkjet print on paper  
Image | H x W | 27 x 39,5 cm  
Frame | H x W | 51,5 x 64 cm

Toyama Glass Art Museum



MARTA KLONOWSKA

18

*Garden View with a Dog*  
after Tomas Yepes

Ensemble of dog sculpture and print  
2014

Dog sculpture | glass on metal frame work  
H x L x W | 45 x 45 x 30 cm

Inkjet print on paper  
Image | H x W | 27 x 39,5 cm  
Frame | H x W | 51,5 x 64 cm

Toyama Glass Art Museum



MARTA KLONOWSKA

19

*Various Original Sketches, Design- and Construction-Drawings*  
by Marta Klonowska

Number of sheets

34 large + 46 small size sheets

Size of sheets

Various sizes from 30 x 21 cm to 100 x 100 cm

Technique

Pencil, crayon, watercolour on paper

Collection of the artist





MARTA KLONOWSKA

20

*The Duchess of Alba (Black)*  
after Francisco de Goya

Ensemble of 1 pair of ladies' shoes and print  
2003

Pair of ladies' shoes | glass on wire mesh  
H x L x W | 17 x 25 x 10 cm

Inkjet print on paper  
Frame | H x W | 49,5 x 40,5 cm

Private collection | Düsseldorf | Germany



MARTA KLONOWSKA

20

*The Duchess of Alba (Black)*  
after Francisco de Goya

Ensemble of 1 pair of ladies' shoes and print  
2003

Pair of ladies' shoes | glass on wire mesh  
H x L x W | 17 x 25 x 10 cm

Inkjet print on paper  
Frame | H x W | 49,5 x 40,5 cm

Private collection | Düsseldorf | Germany



## **Views of the exhibition installation**































































Informational text on the wall, likely a label or plaque.











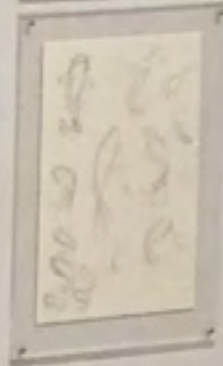
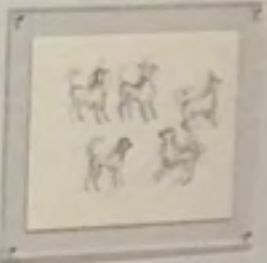
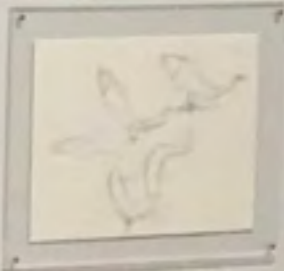
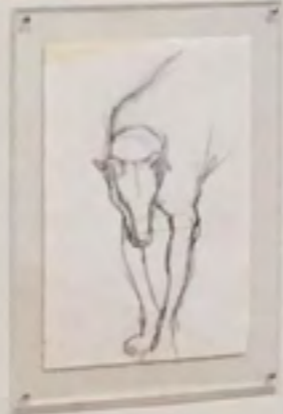
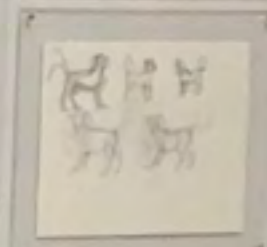
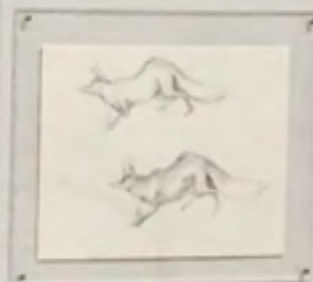
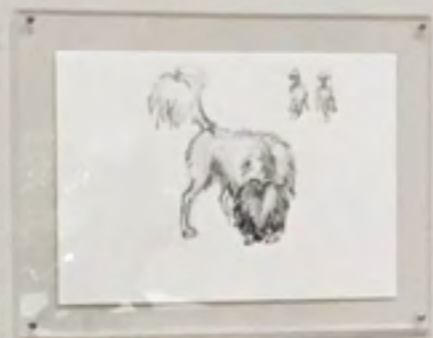
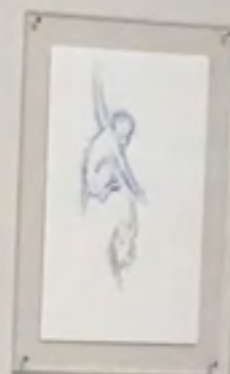
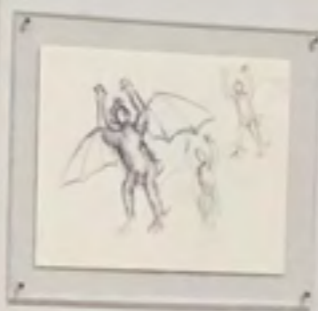
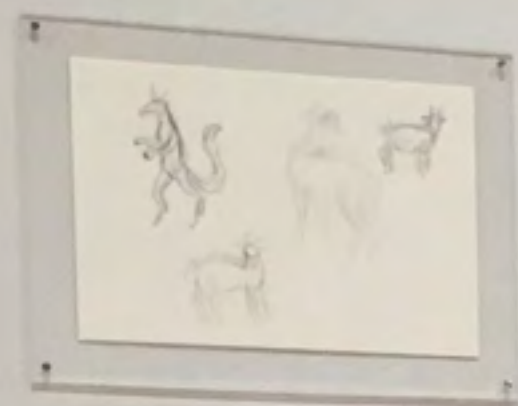










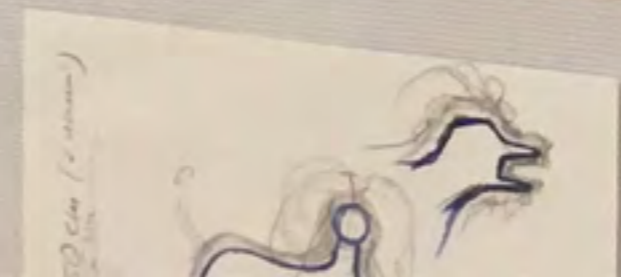








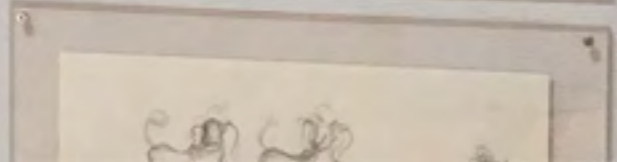
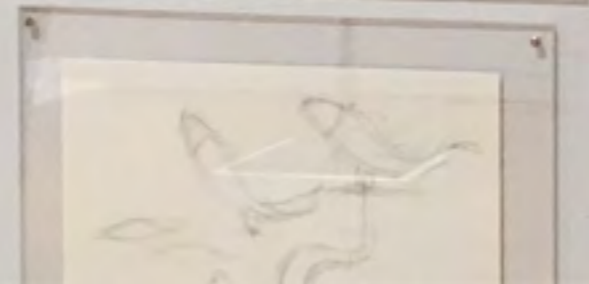
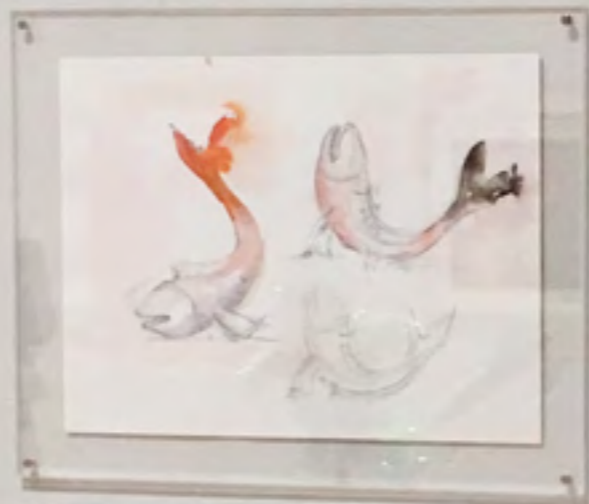














## MARTA KLONOWSKA

Marta Klonowska, born In Warsaw in 1964, studied at the Academies of Fine Arts in Wroclaw (1987-89) and Düsseldorf (1989-97). In 1997, her professor A. R. Penck awarded her the post-graduate degree of *Meisterschülerin*. Marta Klonowska lives in Poland.

### Public Collections

- Barbara Achilles Foundation | Hamburg | DE
- Toyama Glass Art Museum | Toyama | JP
- Alexander Tutsek Foundation | Munich | DE
- The Corning Museum of Glass | Corning, NY | USA
- Kunstsammlungen der Veste Coburg | DE
- Glas-Museum Hentrich | museum kunst palast | Düsseldorf | DE
- Glas-Museum Alter Hof Herding | Ernsting Foundation | Coesfeld-Lette | DE
- Musée-Atelier du Verre | Sars-Poteries | FR

### Recognitions

- 2006 · The Bombay Sapphire Prize - Final Exhibition | London
- 2005 · Jutta-Cuny-Franz Prize | Honorary Diploma | Düsseldorf
- 2002 · Artist in residence | Akerby Skulpturpark | SE

### Publications

- 2014 · Lady Walking Her Dog | Daisuke Murata | The Window of Arts Magazine | Japan | Nov 2014
- 2013 · Nature Morte | Michael Petry | Thames & Hudson | London
- 2011 · Materials Revisited | Museum für Angewandte Kunst Frankfurt | jovis Verlag GmbH
- 2010 · Walking the dog | Kunsthalle Dominikanerkirche Osnabrück | Rasch Verlag
- 2009 · Cocker Spaniel and Other Tools for International Understanding | Kunsthalle zu Kiel | DuMont
- 2008 · Streichelzoo | Helmut Ricke | museum kunst palast | Düsseldorf
- 2006 · Marta Klonowska | David Revere McFadden | The Urban Glass Art Quarterly | Summer Edition

### Solo Exhibitions

- 2019 · Istota | Toyama Glass Art Museum | Toyama | JP
- 2015 · Lion Dog Meets Garden Dog | Iorch+seidel | Berlin
- 2013 · Puszek and Friends | Iorch+seidel | Berlin
- 2009 · Geschöpfe (with Sibylle von Preussen) | Iorch+seidel | Berlin
- Domestic Animals | The Finnish Glass Museum | Riihimäki | FN
- 2008 · Streichelzoo | museum kunst palast | Düsseldorf | DE
- 2005 · Portraits und Tierskizzen | Iorch+seidel | Berlin
- 2003 · dogwalk | Iorch+seidel | Berlin
- 2002 · Akerby Skulpturpark | SE
- 1997 · Galerie Cité Internationale des Arts de Paris

### Group Exhibitions

- 2016 · Glass Now! | Galerie Handwerk | Munich | DE
- Triennale Européene de la Céramique et du Verre | Anciens Abattoirs | Mons | BE
- Wie es uns gefällt | Herbert Gerisch-Foundation | Neumünster | DE
- 2015 · Inaugural exhibition | Toyama Glass Art Museum | JP
- 2012 · European Glass Context | Bornholm Art Museum | DK
- Glasstress NY - New Art from the Venice Biennales | Museum of Arts & Design New York
- In the Name of Love | Alexander Tutsek-Foundation | Munich
- 2011 · Materials Revisited | Museum für Angewandte Kunst | Frankfurt/Main | DE
- Glasstress | Palazzo Cavalli Franchetti | Venice | IT
- 2010 · Walking the dog | Kunsthalle Osnabrück | DE
- 2009 · Cocker Spaniel and other Tools ... | Kunsthalle Kiel | DE
- 2007 · Audacity in Art | Orlando Museum of Art | USA
- 2006 · The Bombay Sapphire Prize – Final Selection | The Bombay Sapphire Foundation | London
- 2004 · Glas im Großformat | Glasmuseum Alter Hof Herding | Coesfeld-Lette | DE

# ISTOTA

**Marta Klonowska**

Solo Exhibition

**Toyama Glass Art Museum**

April 27 - September 23, 2019

**Curated by**

Maho Asada and Haruka Nakashima



**lorch+seidel contemporary**

Konstanzer Str. 9 | T + 49 (0)30 978 939 35 | [info@lorch-seidel.de](mailto:info@lorch-seidel.de)  
D-10707 Berlin | M + 49 (0)176 235 265 65 | [www.lorch-seidel.de](http://www.lorch-seidel.de)

